



# Análisis de Salmonella ISO 6579-1:2017

**Buffered Peptone Water ISO CM1049B (500 g)**  
**BO1067S (10 x 225 ml)**  
 18 ± 2h a 34 a 38°C

↓ 0,1 ml

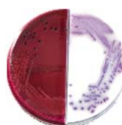
↓ 1 ml

**RVS Broth CM0866B (500 g)**  
**TV5036E (50 tubos)**  
 o  
**MRSV Agar CM1112B ISO (500g)**  
 24 ± 3h a 41,5 ± 1°C

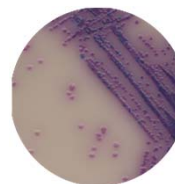
**MKTTn Broth ISO CM1048B (500 g) +**  
**Novobiocin Supplement SR0181E (10 viales)**  
**TV5065E (50 tubos)**  
 24 ± 3h a 37 ± 1°C

**XLD Medium ISO CM0469B**  
**(500 g)**  
**PO5057A (20 placas)**  
 24 ± 3h a 37 ± 1°C

**PO5248E (20 placas)**  
 S. Arizona ATCC 13314



**Salmonella Chromogenic Agar**  
**CM1092B (500 g) + Salmonella**  
**Selective Supplement SR0194E (10**  
**viales)**  
**PO5098A (20 placas)**  
 24 ± 3h a 37 ± 1°C



**Colonia/s Típicas**



**Nutrient Agar CM003B (500 g)**  
**PO5025A (20 placas)**  
 24 ± 3h a 34 - 38°C

**Pruebas Bioquímicas**  
**TV5074D T.S.I. (50 tubos)**  
**TP07187V Urea+Indol (20 tubos)**  
**CM0308S Lysine decarboxylase (5x20 tabs.)**

Pruebas serológicas		
Código	Producto	Presentación
R30858501	Salmonella H Polyvalent Phases 1 & 2	2 ml
R30858201	Salmonella O Polyvalent (Group A - S)	2 ml
R30957401	Salmonella O/Vi	2 ml

Pruebas bioquímicas		
Código	Producto	Presentación
R8311006	RAPID ONE PANEL PACK OF 20	20 galerías
R8325106	RAPID INOC FLUID (2ML) PACK OF 20 TUBES	20 tubos
R8309002	RAPID SPOT INDOLE RGT 15ML	15 mL
MB0266A	MICROBACT OXIDASE STRIPS	50 tiras

