

# Identification made simple

results from clinical samples within 24 hours  
for CPS (coagulase-positive staphylococci)

## Brilliance Staph 24

Comprehensive CPS detection

Thermo Scientific™ *Brilliance*™ Staph 24 Agar is a selective chromogenic medium for the isolation of CPS from clinical samples within 24 hours.

### Observation Made Simple

- Prominent dark blue colonies on a clear background for easy reading of results

### Rapid Results

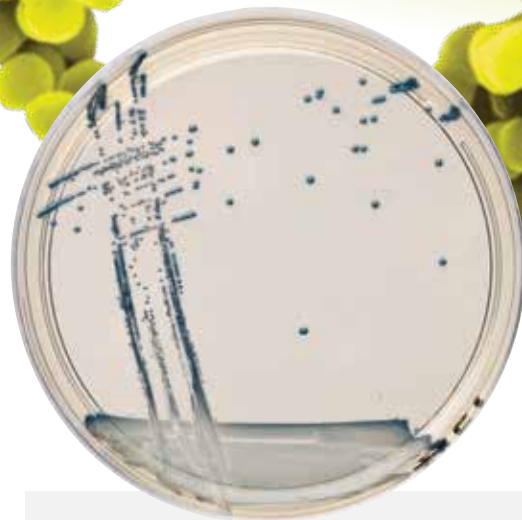
- Results in just 24 hours to facilitate faster patient treatment

### Definitive Answers

- Detects CPS and reduces growth of non-target organisms, significantly reducing confirmatory testing and simplifying workflow

### Efficient Format

- Biplate format available for convenient MRSA and *Staphylococcus aureus* results



*Brilliance* Staph 24 Agar is specifically designed to detect CPS. With traditional media, such as Columbia CNA Agar, detection is not limited to staphylococci, so organisms like streptococci can also grow. However, *Brilliance* Staph 24 reduces non-target organism growth while allowing all strains of CPS to grow uninhibited, providing more accurate results and reducing the number of confirmatory tests required.



SISTEMAS AVANZADOS DE ANÁLISIS, S.L.

CIF: B-47700026

C/. Cardenal Torquemada, 24

Tel. 983 251 143 • 637 596 017

47010 VALLADOLID

[www.analisisavanzados.com](http://www.analisisavanzados.com)

**Thermo**  
SCIENTIFIC

## Performance

Five hundred fifty-eight wound swabs from a UK hospital were tested on *Brilliance* Staph 24 Agar and a competitor chromogenic agar for detection of *S. aureus* (plate 'A'). Performance of the two media are summarized below:

Performance	<i>Brilliance</i> Staph 24 Agar	Plate 'A'
Sensitivity	95.5%	83.2%
Specificity	98.1%	100%
Positive Predictive Value	95.5%	100%
Negative Predictive Value	98.1%	92.7%

## *Brilliance* Staph 24 Agar

Order Information		
Description	Packaging	Ref
<i>Brilliance</i> Staph 24 Agar	10x90mm plates	PO1186A
<i>Brilliance</i> Staph 24 / <i>Brilliance</i> MRSA 2 Biplate	10x90mm biplates	PO1258E

The Thermo Scientific product range offers the complete solution for all your staphylococci testing needs.

### Related Products

<i>Brilliance</i> MRSA 2 Agar (UK)	10x90mm plates	PO1210A
<i>Brilliance</i> MRSA 2 Agar (rest of Europe)	10x90mm plates	PO5310A
<i>Brilliance</i> MRSA 2 Agar / Columbia Agar with Sheep Blood Biplate	10x90mm plates	PB5253E

### Thermo Scientific™ Transport Swabs

The Thermo Scientific™ Oxoid™ swab range creates optimized conditions to maintain the viability of samples while allowing the safe and convenient collection of screening samples

Amies Agar Gel	10x50	TS0001A
Amies Agar with Charcoal	10x50	TS0002A

### Thermo Scientific™ Quality Control Organisms

Thermo Scientific™ Culti-Loops™ Staphylococcus aureus (MRSA) ATCC® 33591™†	5 loops	CL7003
---	---------	--------

### Thermo Scientific™ Confirmatory Tests

Staphylect Plus	100/500 tests	DR850M/B
Thermo Scientific™ Oxoid™ Dryspot™ Staphylect Plus	120 tests	DR0100
Oxoid PBP2' Test <i>A latex agglutination test for the detection of penicillin binding protein 2' (PBP2'), the product of the mecA gene</i>	50 tests	DR0900A

### Thermo Scientific™ Identification

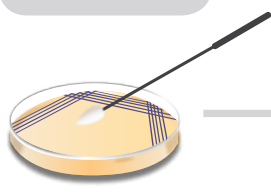
Thermo Scientific™ Oxoid™ Microbact™ Staph 12S	20 tests	MBI561A
RapID™ Staph Plus Panel	20 panels	R8311009

*Brilliance* Staph 24 Agar is CE marked.

For more information about the Thermo Scientific *Brilliance* range of chromogenic media and other products, please visit [www.thermoscientific.com/microbiology](http://www.thermoscientific.com/microbiology) or contact your local representative.

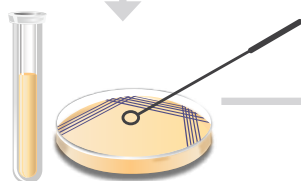
### Sample Processing

Inoculate *Brilliance* Staph 24 plate directly with swab or isolate.



OR

Pre-enrich in suitable selective broth prior to inoculation onto a *Brilliance* Staph 24 plate. Use an incubation protocol appropriate to the broth chosen.



Incubate plates at 37°C for 18–24hr

POSITIVE

Staphylococci



Blue

Identifications are presumptive and should be confirmed.



The ATCC Licensed Derivative® Emblem, the ATCC Licensed Derivative® word mark, and the ATCC catalog marks are trademarks of ATCC. Thermo Fisher Scientific Inc. is licensed to use these trademarks and to sell products derived from ATCC® cultures.

[thermoscientific.com/microbiology](http://thermoscientific.com/microbiology)

© 2014 Thermo Fisher Scientific Inc. All rights reserved. ATCC® is a trademark of ATCC. All other trademarks are property of Thermo Fisher Scientific and its subsidiaries.

#### Contact Information:

microbiology@thermofisher.com  
USA +1 800 255 6730  
International +44 (0) 1256 841144

991-095  
LT2153A  
September 2014

**Thermo**  
SCIENTIFIC

A Thermo Fisher Scientific Brand