



Thermo Scientific
Microbiology

Prepared media selection guide

For the isolation, identification, differentiation and susceptibility testing of microorganisms



SISTEMAS AVANZADOS DE ANÁLISIS, S.L.

CIF: B-47700026

C/. Cardenal Torquemada, 24

Tel. 983 251 143 • 637 596 017

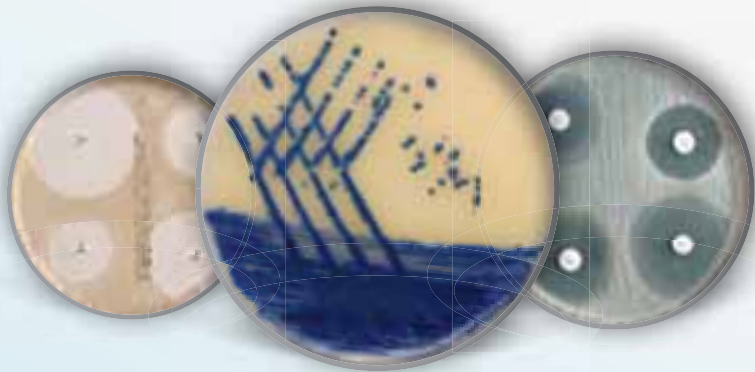
47010 VALLADOLID

www.analisisavanzados.com

Thermo
SCIENTIFIC

Table of Contents

Anaerobe Agar	4
Antimicrobial Susceptibility Testing (AST) Agars	6
Bi-plates	9
Blood Agars	14
<i>Brilliance</i> Chromogenic Media (Clinical)	16
<i>Brilliance</i> Chromogenic Media (Food)	21
Diluents, Water & Peptones	23
Dip-Slides	24
General Purpose Media	25
Pharmaceutical Media	29
ReadyBags	32
Water Testing	33



Culture Media by Organism Type

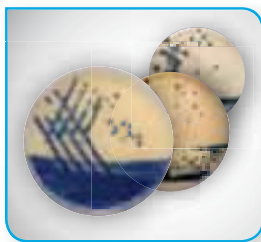
Aeromonas 36
Bacillus cereus 36
Bordetella 37
Burkholderia cepacia 37
Campylobacter 38
Clostridium species 38
Coliforms / Escherichia coli 40
Corynebacteria 41
Dermatophytes 41
Escherichia coli O157 42
Enterobacteriaceae 43
Enterococci 47
Gardnerella 48
Haemophilus & Neisseria 48
Helicobacter pylori 50
Lactobacilli / Bifidobacteria 50
Legionella 51

Listeria 52
Mycoplasma / Ureaplasma 52
Pasteurella 53
Pseudomonas 53
Salmonella 54
Staphylococci / Streptococci 57
Staphylococcus aureus 58
Streptococcus agalactiae 59
Trichomonas 60
Vibrio 60
Yeasts & Moulds 61
Yersinia 63



Bringing more to microbiology

Highest levels of quality & consistency



Our culture medium expertise and rigorous quality standards have made us a preferred supplier and trusted source of prepared media to laboratories around the world. With a full range of formulations and formats, our media products combine ease-of-use with accurate, reproducible performance. You can rest assured knowing the Thermo Scientific™ culture media that reaches your benchtop will provide optimal recovery and differentiation of organisms, for greater confidence in your results.

Unmatched service & support



When you choose Thermo Scientific products for your microbiology needs, consider it the start of a lifelong partnership. Whether you need assistance with protocols, product transitions or product troubleshooting, our team of experts is ready to help you. With best-in-class, multi-language technical support, there's no better partner for your business than Thermo Fisher Scientific.

Your trusted partner for every step of the microbiology workflow



With powerful manual and automated technologies, and a comprehensive line of media and diagnostic products, we are there to support you at every step of the microbiology workflow.



Clinical microbiology

Combining over 150 years of technical and scientific expertise in serving the microbiology community, Remel™, Oxoid™, VersaTREK™ and Sensititre™ products are part of the industry-leading Thermo Scientific product portfolio, renowned for quality, accuracy, reliability and innovation. With powerful manual and automated technologies, and a comprehensive line of media and diagnostic products, we are there to help facilitate faster treatment decisions, and overall better patient care.



Food microbiology

There's very little room for error in food safety and quality. That's why all Thermo Scientific microbiology solutions are developed with a deep understanding of the unique needs of the food testing laboratory. From culture media and diagnostic kits to quality control organisms, our comprehensive workflow solutions are designed to help you work confidently.



Pharmaceutical manufacturing safety

When it comes to pharmaceutical manufacturing and patient safety, there is no compromise. With Thermo Scientific products, you don't have to. Our solutions are designed to meet the demands of the pharmaceutical and biotechnology industries. From peptones and media, to sterile packaging and bioprocess containers, we're here to support you with unparalleled expertise and product quality every step of the way.



Veterinary microbiology

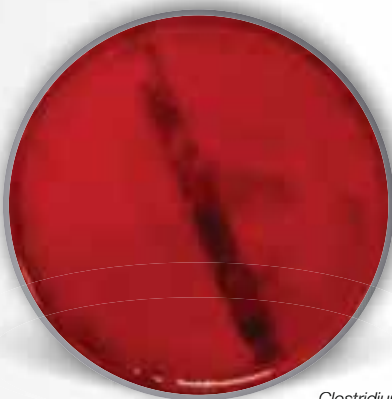
From the industry-leading Thermo Scientific brand comes a comprehensive array of veterinary-specific solutions. From manual AST products and diagnostic tests to automated instrumentation, our products are designed to give you accurate results the first time. When combined with Thermo Scientific QC, collection and transport systems, and extensive culture media offerings, you're sure to experience unmatched quality and performance at every step of your workflow.

Anaerobe Agar

Anaerobes are widely distributed in nature and are the predominant components of bacterial flora of normal human skin and mucous membranes. This section contains a selection of anaerobe media for the recovery of fastidious anaerobic bacteria.

Anaerobe Blood Agar (Wilkins Chalgren) with Neomycin

A selective medium for non-sporing anaerobes. The addition of neomycin inhibits the majority of aerobic and facultative bacteria.



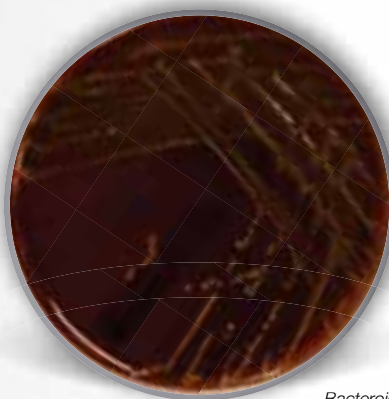
Clostridium perfringens ATCC® 13124™

Image shown
incubated: 36–48 hr. at
35–39°C, anaerobic

Product Code	Format
PB0112A	90mm Plates

Schaedler Anaerobe Agar with Sheep Blood with Haemin and Vitamin K1

A nutritious medium for growth and isolation of obligate and facultative anaerobic organisms, such as the fastidious anaerobic bacteria *Bacteroides*, *Prevotella* and *Porphyromonas spp.*



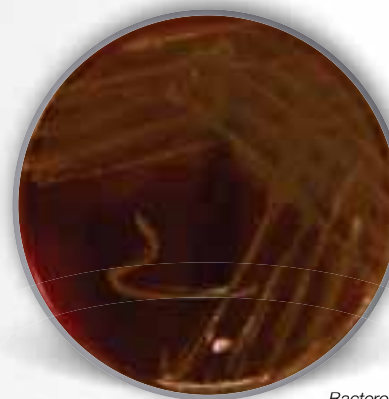
Bacteroides fragilis ATCC® 25285™

Image shown
incubated: 40–48 hr. at
36 ± 1°C, anaerobic

Product Code	Format
PB5034A	90mm Plates

Schaedler Anaerobe KV Selective Agar with Lysed Horse Blood

Highly nutritious selective medium for isolation of anaerobic Gram-negative bacteria especially *Bacteroides* and *Prevotella spp.* The thioglycollate-free formulation allows the growth of aerobic and anaerobic organisms.



Bacteroides fragilis ATCC® 25285™

Image shown
incubated: 40–48 hr. at
36 ± 1°C, anaerobic

Product Code	Format
PO5020A	90mm Plates

Anaerobe Blood Agar (Wilkins Chalgren) with Nalidixic Acid and Tween

Product Code	Format
PB0113A	90mm Plates

Anaerobe Blood Agar with Neomycin and Aztreonam

PB1092A	90mm Plates
---------	-------------

Anaerobe Recovery and Isolation Agar with Horse Blood

PB1243A	90mm Plates
---------	-------------

Anaerobe Recovery and Isolation Agar with Horse Blood and Neomycin

PB1244A	90mm Plates
---------	-------------

Columbia Blood Agar with Neomycin

PB0219A	90mm Plates
---------	-------------

Fastidious Anaerobe Agar (F.A.A.) with Horse Blood

PB0225A	90mm Plates
---------	-------------

Fastidious Anaerobe Agar (F.A.A.) with Horse Blood and Gentamicin

PB0252A	90mm Plates
---------	-------------

Bi-plates

The use of bi-plates saves space and reduces the number of anaerobic jar kits required.

Schaedler Anaerobe Agar / Schaedler Anaerobe KV Selective Agar

Product Code	Format
PB5204E	90mm Bi-plate

Tubes

Media for the cultivation of aerobic and anaerobic organisms.

Schaedler Broth with Haemin and Vitamin K

Product Code	Format
TV5008D	50x9 mL, Tube with screw cap

Thioglycollate Medium (EP / USP)

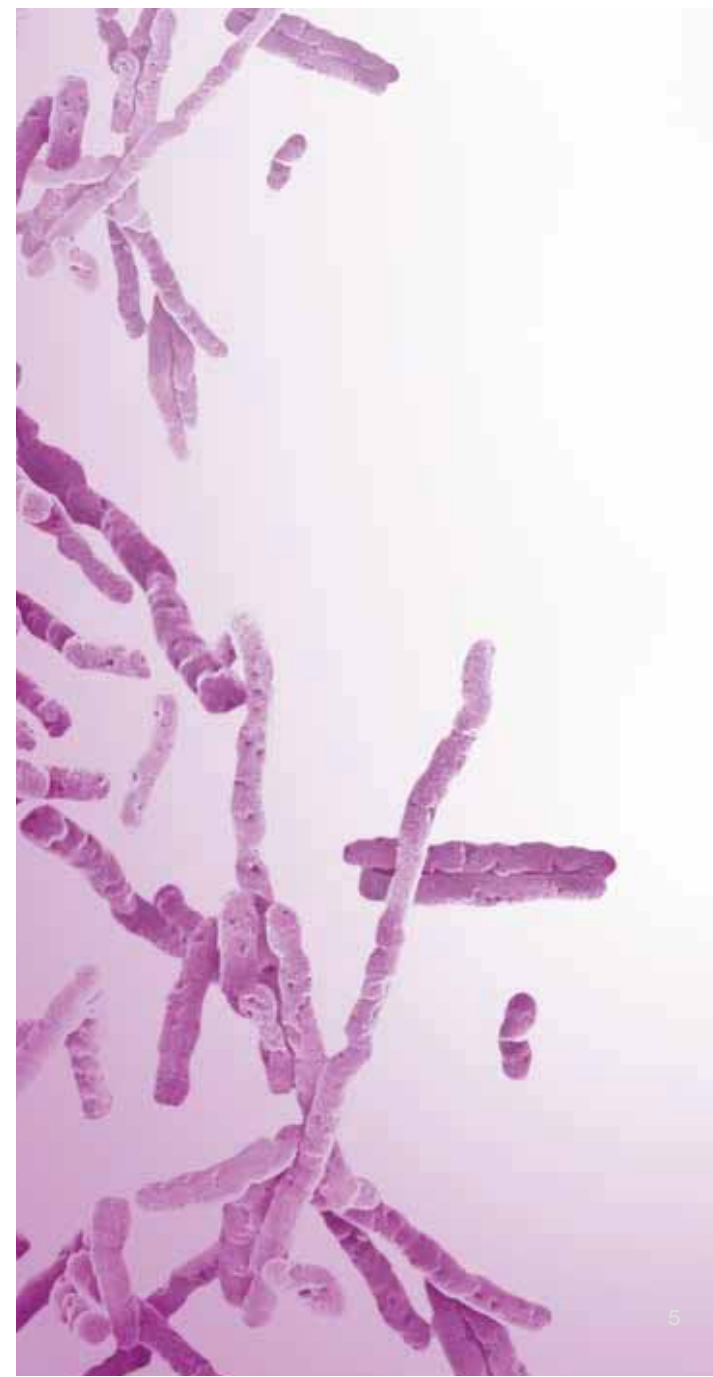
TV5001D	50x9 mL, Tube with screw cap
---------	------------------------------

Bottles

Media for the cultivation of aerobic and anaerobic organisms in the performance of sterility tests.

Thioglycollate Medium (EP / USP)

Product Code	Format
BO0368M	10x100 mL, Vial – Narrow neck with septum
BO0510V	10x100 mL, DIN – Wide neck bottle with septum
BO0368F	24x15 mL, Vial – Narrow neck with septum
BO0510M	10x100 mL, DIN – Wide neck bottle with septum
BO0211M	10x100 mL, Sirop – Screw cap bottle
BO0211G	24x20 mL, Universal – 1 oz. Straight walled

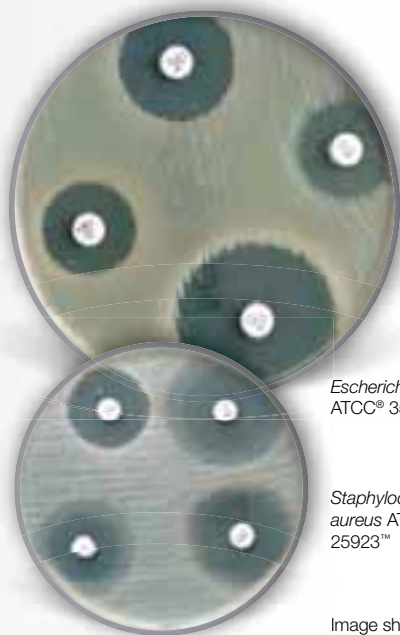


Antimicrobial Susceptibility Testing (AST) Agars

A broad range of AST media that conform to international standards EUCAST and CLSI as well as national guidelines including BSAC.

Mueller Hinton Agar

A medium that may be used in internationally recognised standard procedures. Used for testing susceptibility of non-fastidious organisms, and conforms to EUCAST and CLSI.



Escherichia coli
ATCC® 35218™

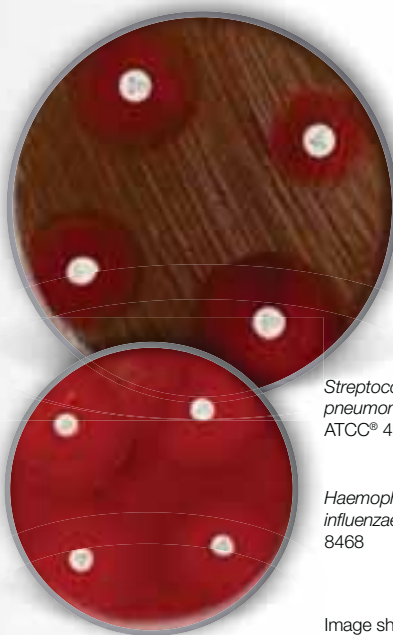
Staphylococcus aureus ATCC®
25923™

Image shown incubated:
18 ± 2 hr. at 36 ± 1°C,
aerobic

Product Code	Format
PO5007A**	90mm Plates
PO0152A*	90mm Plates
PO1191S	140mm Plates

Mueller Hinton Agar with Horse Blood and NAD

An antimicrobial susceptibility testing medium according to EUCAST. The addition of horse blood and NAD enables the growth of non-fastidious organisms and the formulation ensures that toxic factors will be absorbed to establish better growth from very small inocula.



Streptococcus pneumoniae
ATCC® 49619™

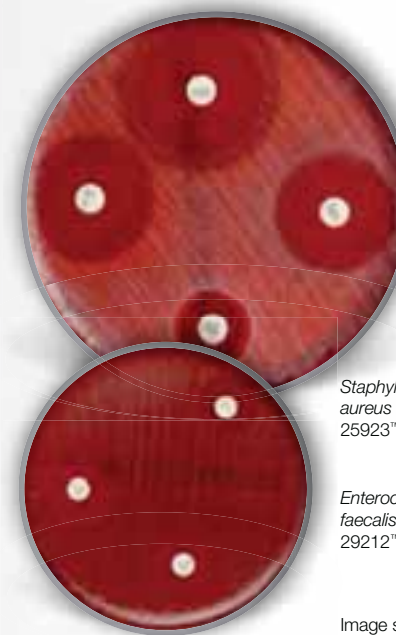
Haemophilus influenzae NCTC
8468

Image shown incubated:
18 ± 2 hr. at 36 ± 1°C,
capnophile

Product Code	Format
PB5303A**	90mm Plates
PB1229A*	90mm Plates

Mueller Hinton Agar with Sheep Blood

A medium for antimicrobial susceptibility testing for non-fastidious organisms. Conforms to CLSI and DIN. The formulation of Mueller Hinton Agar ensures that toxic factors found during growth will be absorbed and its presence is often essential to establish growth from very small inocula.



Staphylococcus aureus ATCC®
25923™

Enterococcus faecalis ATCC®
29212™

Image shown incubated:
18–24 hr. at 36 ± 1°C,
aerobic

Product Code	Format
PB5007A**	90mm Plates
PB0431A*	90mm Plates

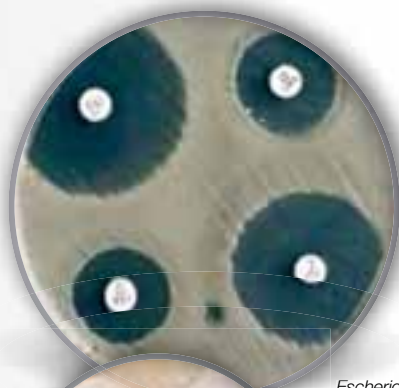
* UK ** Mainland Europe

Product codes are valid for all countries, except USA, unless stated otherwise.

Antimicrobial Susceptibility Testing (AST) Agars

Iso-Sensitest Agar

A closely defined medium with a stabilised mineral content for antimicrobial susceptibility testing of fastidious organisms that produce optimum non-antimicrobial zones of inhibition. Conforms to BSAC.



Escherichia coli
ATCC® 35218™



Staphylococcus aureus ATCC®
25923™

Image shown incubated:
18–24 hr. at 36 ± 1°C,
aerobic

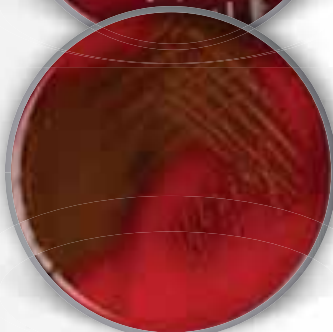
Product Code	Format
PO5003A**	90mm Plates
PO0144A*	90mm Plates

Iso-Sensitest Agar with Horse Blood and 20mg/L NAD

For testing susceptibility of fastidious organisms according to BSAC. The addition of 5% of horse blood has been recommended as a suitable medium when testing susceptibility of *Helicobacter pylori*.



Staphylococcus aureus ATCC®
25923™



Streptococcus pyogenes ATCC®
19615™

Image shown incubated:
18–24 hr. at 35–39°C,
aerobic

Product Code	Format
PB0378A	90mm Plates

* UK ** Mainland Europe
Product codes are valid for all countries, except USA, unless
stated otherwise.

Antimicrobial Susceptibility Testing (AST) Agars

Columbia Agar Base with 2% Salt (4mm Depth)

Product Code	Format
PO0879A	90mm Plates

Diagnostic Sensitivity Testing (D.S.T.) Agar

PO5068A**	90mm Plates
PO0130A*	90mm Plates

Diagnostic Sensitivity Testing (D.S.T.) Agar with Sheep Blood

PB5068A	90mm Plates
---------	-------------

Haemophilus Testing Medium (HTM)

PO5138A	90mm Plates
---------	-------------

Iso-Sensitest Agar (4mm Depth)

Product Code	Format
PO0779A	90mm Plates

Iso-Sensitest Agar with Horse Blood

PB0146A	90mm Plates
---------	-------------

Iso-Sensitest Agar with Lysed Horse Blood

PB0145A	90mm Plates
---------	-------------

Iso-Sensitest Agar with Sheep Blood

PB5003A	90mm Plates
---------	-------------

Iso-Sensitest Chocolate Agar

PB0147A	90mm Plates
---------	-------------

Mueller Hinton Agar with 2% Sodium Chloride

PO5139A**	90mm Plates
PO0799A*	90mm Plates

Tubes

Liquid media in tubes for agar dilution methods.

Iso-Sensitest Broth

Product Code	Format
TV5061E	50x10 mL, Tube with screw cap

Maximum Recovery Diluent

TV5016D	50x9 mL, Tube with screw cap
---------	------------------------------

Bottles

Liquid media in bottles for AST testing.

0.9% Saline

Product Code	Format
BO0334B	24x3 mL, Bijou – 1/4 oz. Straight walled
EB0334B	200x3 mL, Bijou – 1/4 oz. Straight walled
BO1176B	300x3 mL, Tube with screw cap
BO0334C	24x5 mL, Bijou – 1/4 oz. Straight walled
BO0334E	24x10 mL, Universal – 1 oz. Straight walled
BO0334M	10x100 mL, Sirop – screw cap bottle
BO0334W	10x1000 mL, Sirop – screw cap bottle

* UK ** Mainland Europe
Product codes are valid for all countries, except USA, unless stated otherwise.

Bi-plates

Thermo Fisher Scientific offers a broad range of media as a bi-plate. The use of bi-plates allows more storage room in incubators, less gas generating kits used in jars and more confidence in interpretation of the results.

Brilliance™ MRSA 2 Agar / Columbia Agar with Sheep Blood PLUS

Columbia Agar with sheep blood is a medium for the growth of fastidious organisms with clearly visible haemolysis forms. *Brilliance* MRSA 2 Agar is a selective medium for the screening of clinical samples for the presence of methicillin-resistant *Staphylococcus aureus* (MRSA). The combination of two media allows additional features as the non-selective Columbia Agar acts as control and provides a picture of organisms present in the sample.

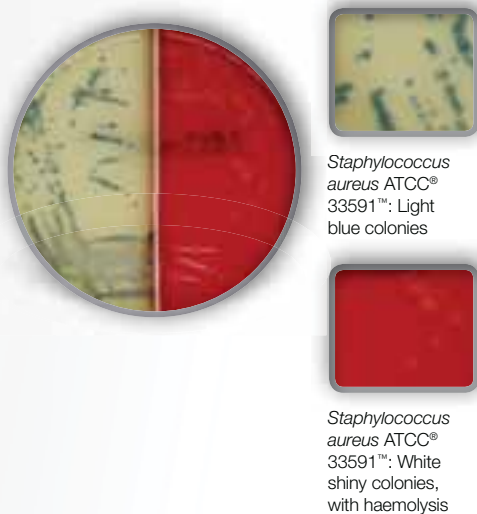


Image shown incubated: 18–24 hr. at 35–39°C, aerobic

Product Code	Format
PB5253E	90mm Bi-plate

CLED Medium / MacConkey Agar No. 3

For diagnostic urinary bacteriology. CLED supports the growth of all urinary potential pathogens giving good colonial differentiation and clear diagnostic characteristics. MacConkey Agar No. 3 is a selective medium giving excellent differentiation between coliforms and non-lactose fermenters with inhibition of Gram-positive micrococci.

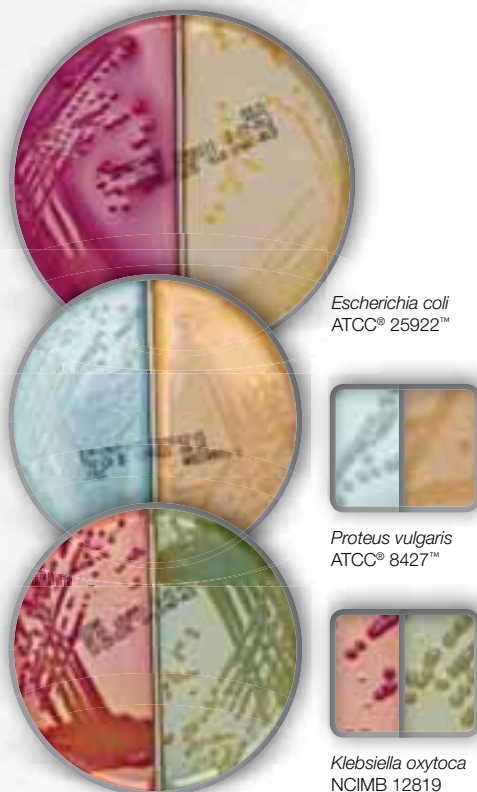


Image shown incubated: 18–24 hr. at 36 ± 1°C, aerobic

Product Code	Format
PO5217E	90mm Bi-plate

Columbia Agar with Blood / Chocolate Agar

For the isolation and cultivation of fastidious microorganisms from different specimens. The blood medium contains 5% sheep blood for the growth of fastidious organisms with clearly visible haemolysis forms for staphylococci and streptococci and gives typical growth for *Streptococcus pneumoniae* (dent morphology). The chocolate medium is highly nutritious for the isolation and cultivation of fastidious microorganisms. The presence of starch ensures that toxic metabolites produced by *Neisseria* are absorbed. Phosphate buffers are included to prevent changes in pH due to amine production that would affect the survival of the organism.

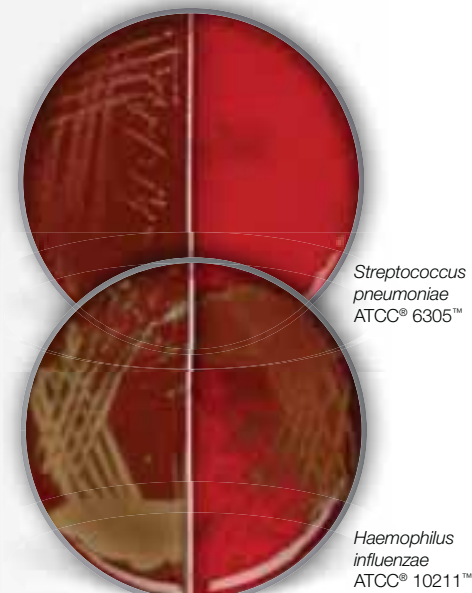
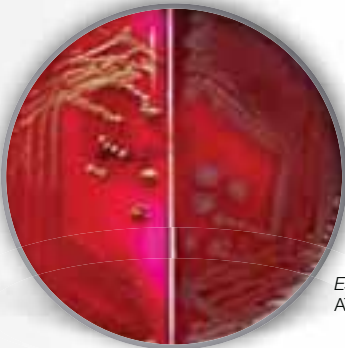


Image shown incubated: 40–48 hr. at 36 ± 1°C, aerobic, enhanced CO₂ atmosphere

Product Code	Format
PB5202E	90mm Bi-plate

Columbia Agar with Blood / Endo Agar

A divided plate for growth of fastidious organisms with clearly visible haemolysis forms, and a selective medium for the detection and isolation of Enterobacteriaceae. Columbia Agar with 5% sheep blood allows clearly visible haemolysis forms for staphylococci and streptococci, and gives typical growth for *Streptococcus pneumoniae* (dent morphology). Endo Agar allows easy identification of *Escherichia coli* and *Klebsiella spp.* as the colonies possess a golden metallic sheen.



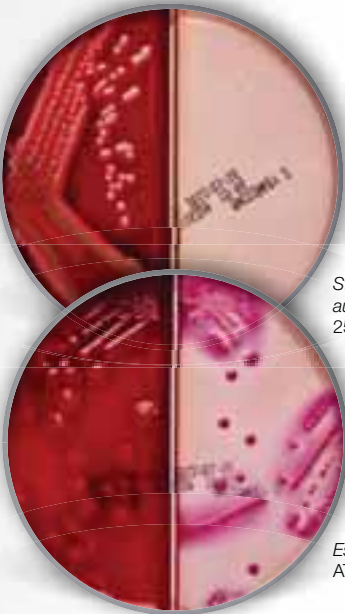
Escherichia coli
ATCC® 8739™

Image shown
incubated: 18–24 hr.
at 36 ± 1°C, aerobic

Product Code	Format
PB5200E	90mm Bi-plate

Columbia Agar with Blood / MacConkey Agar No. 3

For the simultaneous growth of fastidious organisms with clearly visible haemolysis forms, the detection and enumeration of coliform organisms, and for the detection and isolation of *Salmonella* and *Shigella spp.* Columbia Agar with 5% sheep blood allows clearly visible haemolysis forms for staphylococci and streptococci and gives typical growth for *Staphylococcus pneumoniae* (dent morphology).



Staphylococcus aureus ATCC® 25923™ (Columbia)

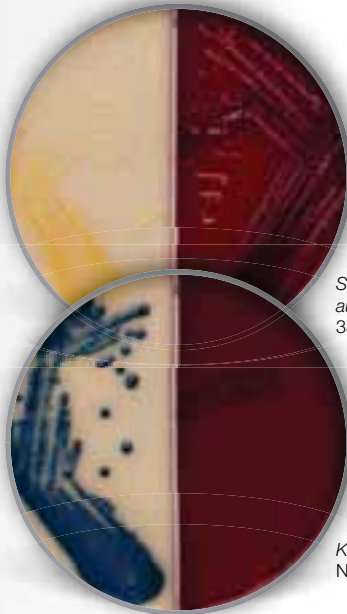
Escherichia coli
ATCC® 25922™

Image shown
incubated: 18–24 hr.
at 36 ± 1°C, aerobic

Product Code	Format
PB5207E	90mm Bi-plate

Columbia CNA Aesculin Selective Agar / Brilliance UTI Agar

Media for the presumptive identification of organisms occurring in urinary tract infections. The combination of a selective medium with a chromogenic medium allows an accurate and easy identification of pathogens.



Staphylococcus aureus ATCC® 33591™

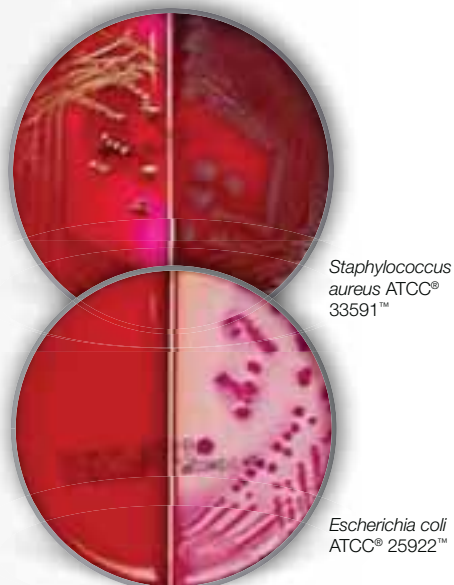
Klebsiella oxytoca
NCIMB 12819™

Image shown
incubated: 18–24 hr.
at 36 ± 1°C, aerobic

Product Code	Format
PB5220E	90mm Bi-plate

Columbia CNA Aesculin Selective Agar / MacConkey Agar No. 3, Mod.

For the selective isolation of Gram-positive cocci and Enterobacteriaceae. Columbia CNA Aesculin is a selective medium for the isolation and differentiation of staphylococci and streptococci with clear haemolysis and typical growth for *Staphylococcus pneumoniae* (dent morphology). MacConkey Agar No. 3 is suitable for the detection and enumeration of coliform organisms, and also for detection and isolation of *Salmonella* and *Shigella* spp. Bile salts and crystal violet gives improved differentiation between coliforms and non-lactose fermenting organisms whilst Gram-positive cocci are completely inhibited.



Staphylococcus aureus ATCC® 33591™

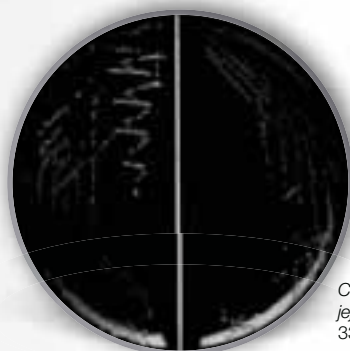
Escherichia coli ATCC® 25922™

Image shown incubated: 18–24 hr. at 36 ± 1°C, aerobic

Product Code	Format
PB5224E	90mm Bi-plate

Karmali Selective Medium

A blood free medium for the isolation of *Campylobacter* spp. The selectivity of fungi is achieved by the addition of amphotericin B instead of the toxic cycloheximide. The use of a bi-plate ensures more storage capacity in the incubator and less kits for gas generating kits for microaerophilic atmosphere.



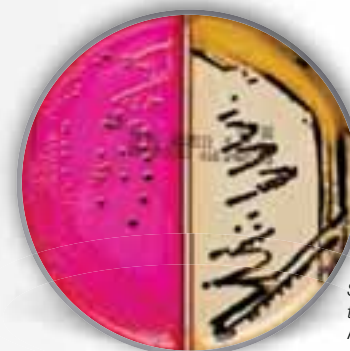
Campylobacter jejuni ATCC® 33291™

Image shown incubated: 40–48 hr. at 42 ± 1°C, microaerophilic

Product Code	Format
PO5219E	90mm Bi-plate

S.S. Agar / X.L.D. Medium

A selective medium for the isolation of *Salmonella* and *Shigella* spp. The modified S.S. formulation allows growth of large colonies of *Salmonella* with improved blackening at the centre and the altered salt concentration has improved its performance in the growth of *Shigellae* without too much increased growth of commensal organisms. Widely recognised in international standards, X.L.D. relies on xylose fermentation, lysine decarboxylation and production of hydrogen sulphide for the primary differentiation of *Shigella* and *Salmonella* spp. from non-pathogenic bacteria.



Salmonella typhimurium ATCC® 14028™

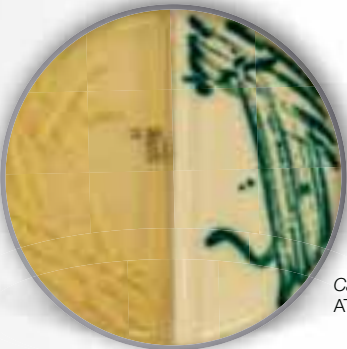
Image shown incubated: 18–24 hr. at 36 ± 1°C, aerobic

Product Code	Format
PO5210E	90mm Bi-plate

Bi-plates

Brilliance Candida / Sabouraud G.C.

Bi-plate for the simultaneous isolation of dermatophytes, other fungi and yeast, and the isolation and presumptive identification of *Candida albicans*. Sabouraud G.C. Agar is widely used for the isolation of pathogenic fungi from material containing large numbers of other fungi or bacteria. *Brilliance Candida Agar* allows direct differentiation of *Candida albicans*.



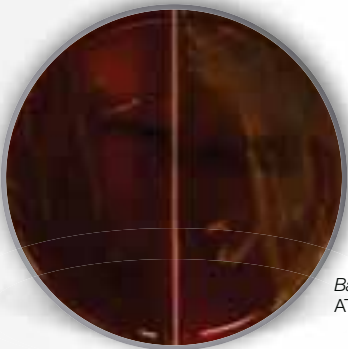
Candida albicans
ATCC® 10231™

Image shown
incubated: 48–72 hr.
at 22 ± 1°C, aerobic

Product Code	Format
PO5258E	90mm Bi-plate

Schaedler Anaerobe Agar / Schaedler Anaerobe KV Selective Agar

A divided plate with a highly nutritive medium for growth of obligate and facultative anaerobic organisms, and a selective medium for growth and isolation of anaerobic Gram-negative bacteria, especially *Bacteroides* and *Prevotella* spp.



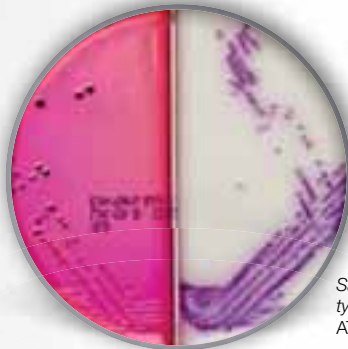
Bacteroides fragilis
ATCC® 25285™

Image shown
incubated: 40–48 hr.
at 36 ± 1°C, anaerobic

Product Code	Format
PB5204E	90mm Bi-plate

Brilliance Salmonella / X.L.D. Agar

Selective media for the isolation and differentiation of *Salmonella* spp. This bi-plate combination allows you to work according to the ISO method for *Salmonella* detection. Widely recognised in international standards, X.L.D. relies on xylose fermentation, lysine decarboxylation and production of hydrogen sulphide for the primary differentiation of *Shigella* and *Salmonella* spp. from non-pathogenic bacteria. *Brilliance Salmonella Agar* is a selective medium for the presumptive identification of *Salmonella* spp. *Brilliance Salmonella Agar* contains the Inhibigen™ technology, which ensures high selectivity of the medium.



Salmonella
typhimurium
ATCC® 14028™

Image shown
incubated: 18–24 hr.
at 36 ± 1°C, aerobic

Product Code	Format
PO5248E	90mm Bi-plate

Anaerobe Blood (WC) / Neo Oneside Bi-plate

Product Code	Format
PB1156E	90mm Bi-plate

Chromogenic C. albicans Agar / Sabouraud G.C. Agar

PO5243E	90mm Bi-plate
---------	---------------

Brilliance UTI / Brilliance UTI

PO1232E	90mm Bi-plate
---------	---------------

Brilliance UTI Clarity / Staph-Strep CNA Mod

PB1155E	90mm Bi-plate
---------	---------------

CBA + Columbia Agar / Chocolate Horse Blood

PB1224E	90mm Bi-plate
---------	---------------

CBA / Staph-Strep CAP

PB1223E	90mm Bi-plate
---------	---------------

CCDA / CCDA

PO0966E	90mm Bi-plate
---------	---------------

Chocolate G.C. Selective / Chocolate G.C. Selective

PO1101E	90mm Bi-plate
---------	---------------

CLED / Staph-Strep

PB1228E	90mm Bi-plate
---------	---------------

Columbia Blood / Chocolate Bacitracin

Product Code	Format
PB0742E	90mm Bi-plate

Columbia Blood / MacConkey

PO0165E	90mm Bi-plate
---------	---------------

Columbia CAP / CLED

PB1248E	90mm Bi-plate
---------	---------------

CTSMAC / X.L.D.

PO1222E	90mm Bi-plate
---------	---------------

F.A.A. with Nalidixic Acid and Tween / F.A.A. with Neomycin Bi-plate

PB0311E	90mm Bi-plate
---------	---------------

G.C. (VCNT) / Sabouraud Chloramphenicol

PO0140E	90mm Bi-plate
---------	---------------

Oxoid Lysed G.C. / Sabouraud Chloramphenicol

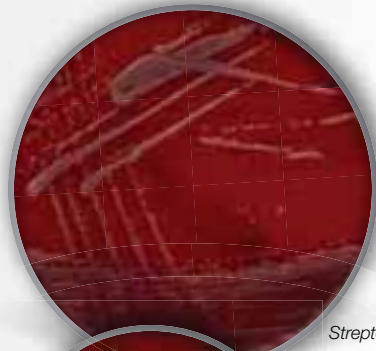
PB1241E	90mm Bi-plate
---------	---------------

Blood Agars

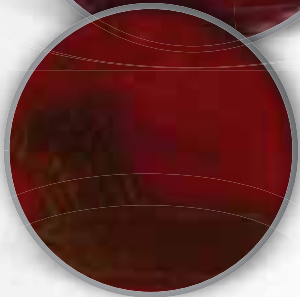
Blood Agars enable the differentiation of organisms that show hemolytic reactions. Thermo Fisher Scientific offers a range of media with different blood sources to make identification easier.

Columbia Agar with Sheep Blood

A medium containing 7% sheep blood for growth of fastidious organisms with rapid production of large colonies, clearly defined zones of haemolysis and good colonial differentiation, plus an improved all-round performance.



Streptococcus pyogenes ATCC® 19615™



Streptococcus pneumoniae ATCC® 6305™

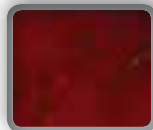


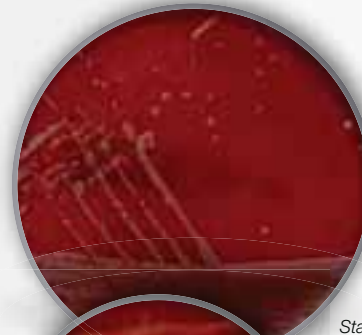
Image shown incubated: 18–24 hr. at 36 ± 1°C, aerobic

Product Code	Format
PB5008A	90mm Plates

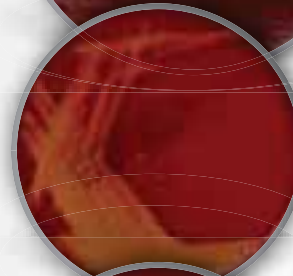
* UK ** Mainland Europe
Product codes are valid for all countries, except USA, unless stated otherwise.

Columbia Agar with Sheep Blood^{PLUS}

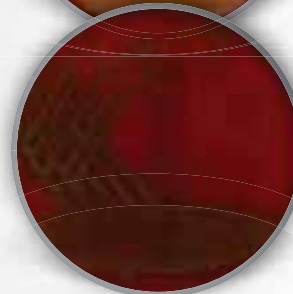
A medium containing 5% sheep blood for the growth of fastidious organisms with clearly visible haemolysis forms for staphylococci and streptococci. Gives typical growth for *Streptococcus pneumoniae* (dent morphology).



Staphylococcus aureus ATCC® 33591™



Streptococcus pyogenes ATCC® 19615™



Streptococcus pneumoniae ATCC® 6305™



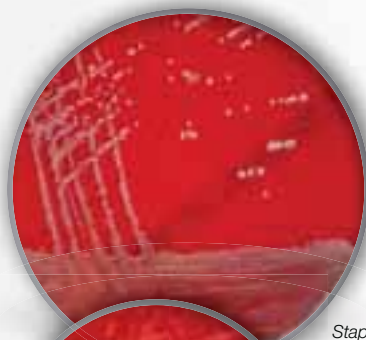
Image shown incubated: 18–24 hr. at 36 ± 1°C, aerobic

Product Code	Format
PB5039A**	90mm Plates
PB0123A*	90mm Plates

ATCC Licensed
Derivative

Columbia Agar with Horse Blood

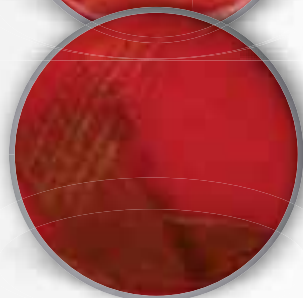
A multi-purpose medium containing 5% horse blood suitable for the cultivation and determining haemolytic reactions of fastidious organisms.



Staphylococcus aureus ATCC® 33591™



Streptococcus pyogenes ATCC® 19615™



Streptococcus pneumoniae ATCC® 6305™

Image shown incubated: 18–24 hr. at 36–39°C, aerobic

Product Code	Format
PB0122A	90mm Plates

Blood Agar Base No. 2 with Horse Blood

Product Code	Format
PB0114A	90mm Plates

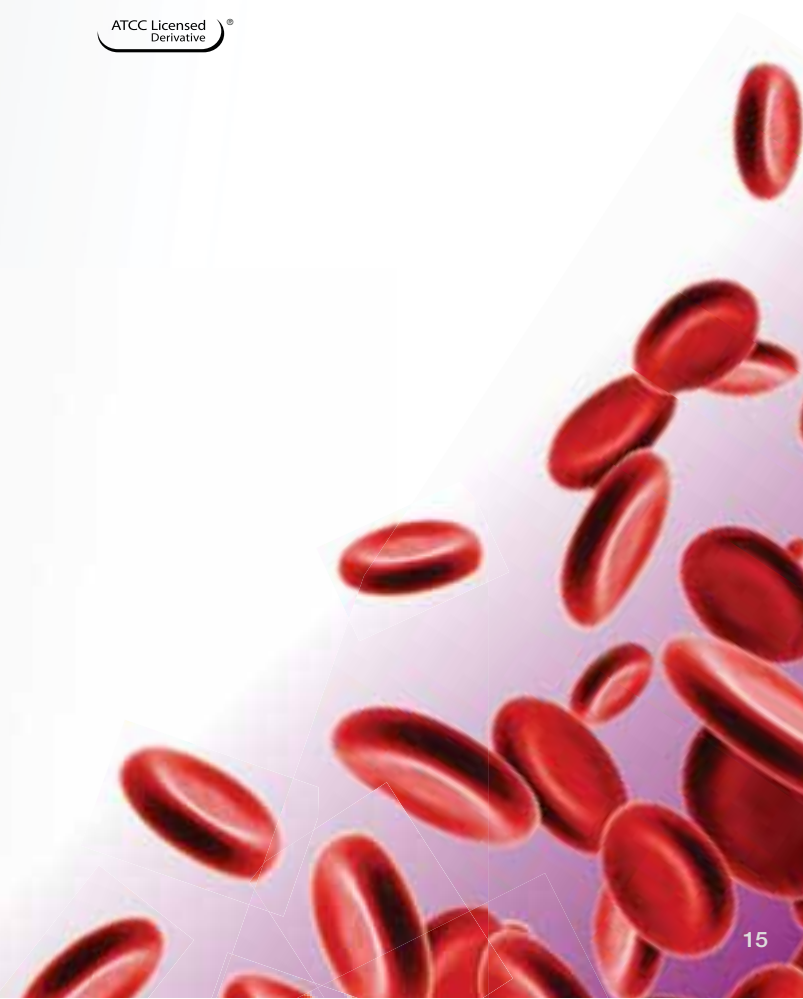
Blood Agar Base No. 2 with Sheep Blood

PB0115A	90mm Plates
---------	-------------

Columbia Agar with Chocolate Horse Blood

PB0124A	90mm Plates
---------	-------------

ATCC Licensed
Derivative

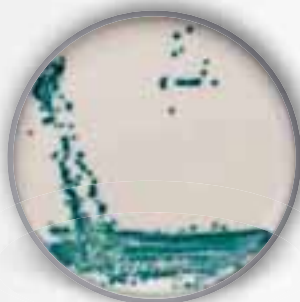


Brilliance Chromogenic Media (Clinical)

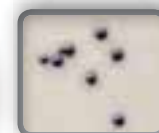
Brilliance media help to identify organisms within 24 hours and the bright colours on the opaque background support the easy identification of the target organism.

Brilliance Candida Agar

A selective differential medium for the rapid isolation and identification of clinically important *Candida spp.* allowing for more timely and targeted antifungal therapy. Brilliance Candida Agar differentiates *Candida albicans* and *Candida tropicalis* from other *Candida spp.* within 48 hours, and the chromogenic colour reactions on an opaque background allow easy differentiation of *Candida spp.* in different target colours, especially when mixed infections are present. Chloramphenicol inhibits bacterial growth, even after prolonged incubation.



Candida albicans
ATCC® 10231™:
Green colonies



Candida tropicalis
ATCC® 750™: Dark
blue colonies

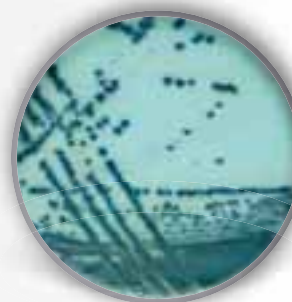
Image shown
incubated: 48 hr. at
32 ± 1°C, aerobic

Product Code	Format
PO5170A**	90mm Plates
PO1034A*	90mm Plates

* UK ** Mainland Europe
Product codes are valid for all countries, except USA, unless
stated otherwise.

Brilliance CRE Agar

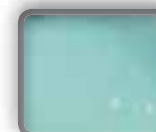
A chromogenic screening plate for the detection of carbapenem-resistant Enterobacteriaceae, including NDM-1. The medium provides a clear and easy colour differentiation of *Escherichia coli* and the KESC group. Besides Enterobacteriaceae the medium also allows the growth of carbapenem-resistant *Acinetobacter*. Results are obtained in just 18 hours helping minimize the opportunity for transmission and target treatment earlier.



Carbapenem-resistant
Escherichia coli



Klebsiella pneumoniae
NDM-1 NCTC 13443:
Dark blue/purple
colonies



Acinetobacter
baumannii NCTC
13420: White/gray
colonies

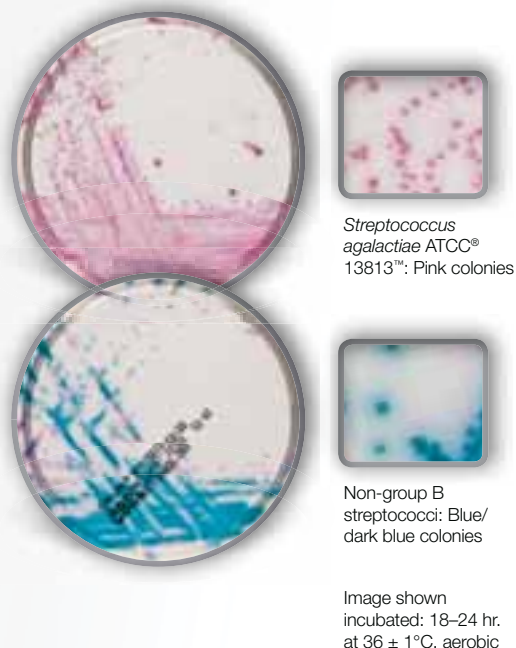
Image shown
incubated: 18–24 hr.
at 37 ± 1°C, aerobic

Product Code	Format
PO1226A	90mm Plates

Brilliance Chromogenic Media (Clinical)

Brilliance GBS Agar

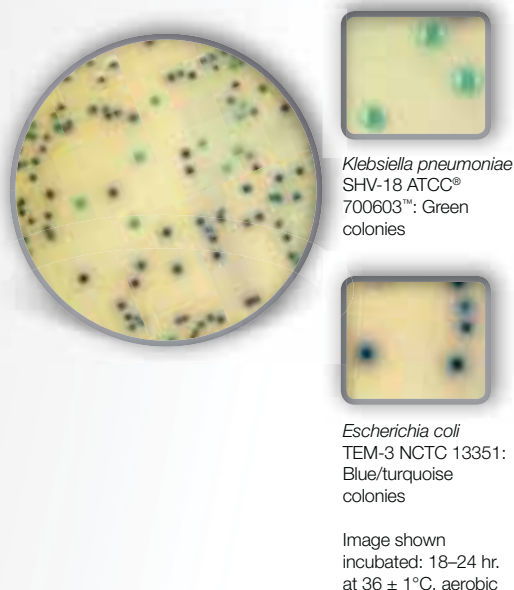
A selective medium for the screening of clinical samples for the presence of group B streptococci. To allow the medium to differentiate GBS accurately, it contains a second chromogen. Non-GBS grow as blue or purple colonies on *Brilliance* GBS Agar. *Brilliance* GBS incorporates Inhibigen technology, a targeted inhibition of enterococci and group D streptococci, ensuring a high level of sensitivity and specificity.



Product Code	Format
PO5320A	90mm Plates

Brilliance ESBL Agar

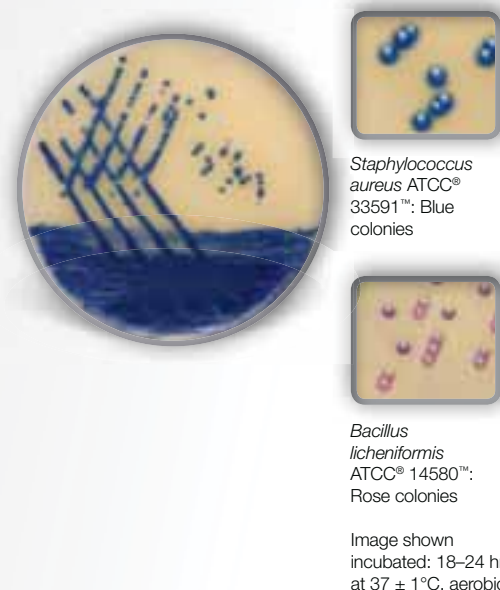
A selective medium for the screening of clinical samples for the presence of extended-spectrum beta-lactamase (ESBL) producing bacteria. The easy and clear differentiation of *Escherichia coli* and the KESC group by different colours helps to identify ESBL producing organisms. The inhibition of AmpC producers reduces false positives and the need for confirmatory tests.



Product Code	Format
PO5302A	90mm Plates

Brilliance MRSA 2 Agar

A selective medium for the screening of clinical samples for the presence of methicillin-resistant *Staphylococcus aureus* (MRSA). Results within 18 hours and no reincubation of negatives help to initiate early infection control procedures. Reliable results lead to less confirmatory tests. The new improved formulation contains two chromogens to differ MRSA and non-MRSA by distinctive blue MRSA colonies, making the identification of MRSA easy and accurate.



Product Code	Format
PO5310A**	90mm Plates
PO1210A*	90mm Plates

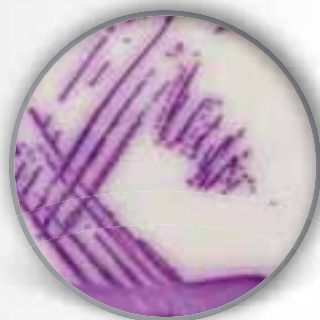
* UK ** Mainland Europe
Product codes are valid for all countries, except USA, unless stated otherwise.

Brilliance Chromogenic Media (Clinical)



Brilliance Salmonella Agar

A selective medium for the presumptive identification of *Salmonella* spp. *Brilliance* Salmonella Agar contains Inhibigen technology, which ensures high selectivity of the medium. *Escherichia coli* is inhibited and overgrowth of the target organism is avoided.



Salmonella
typhimurium
ATCC® 14028™

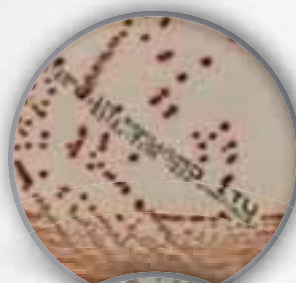
Image shown
incubated: 22–26 hr.
at 36 ± 1°C, aerobic

Product Code	Format
PO5098A	90mm Plates

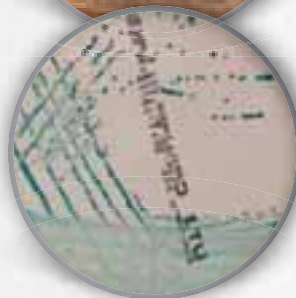
* UK ** Mainland Europe
Product codes are valid for all countries, except USA, unless stated otherwise.

Brilliance UTI Clarity™ Agar

A chromogenic medium for the isolation, enumeration and presumptive identification of organisms occurring in urinary tract infections. Differentiates clearly between coliforms and enterococci, and gives improved TDA reactions in the identification of *Proteus*, *Morganella* and *Providencia* spp., minimising confirmatory testing. *Brilliance* UTI Clarity Agar provides the same features as *Brilliance* UTI Agar, except the transparent background, which helps for clear differentiation of the target organisms. Presumptive identification of *Escherichia coli* can be confirmed using a rapid indole test DMAC (Cat. no. MB1448A) for same-day results.



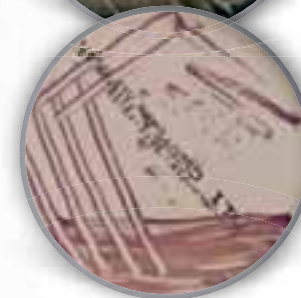
Escherichia coli
ATCC® 25922™:
Pink/red colonies,
Indole positive



Enterococcus
faecalis ATCC®
29212™: Turquoise
blue/green
colonies



Klebsiella oxytoca
NCIMB 12819™:
Blue colonies



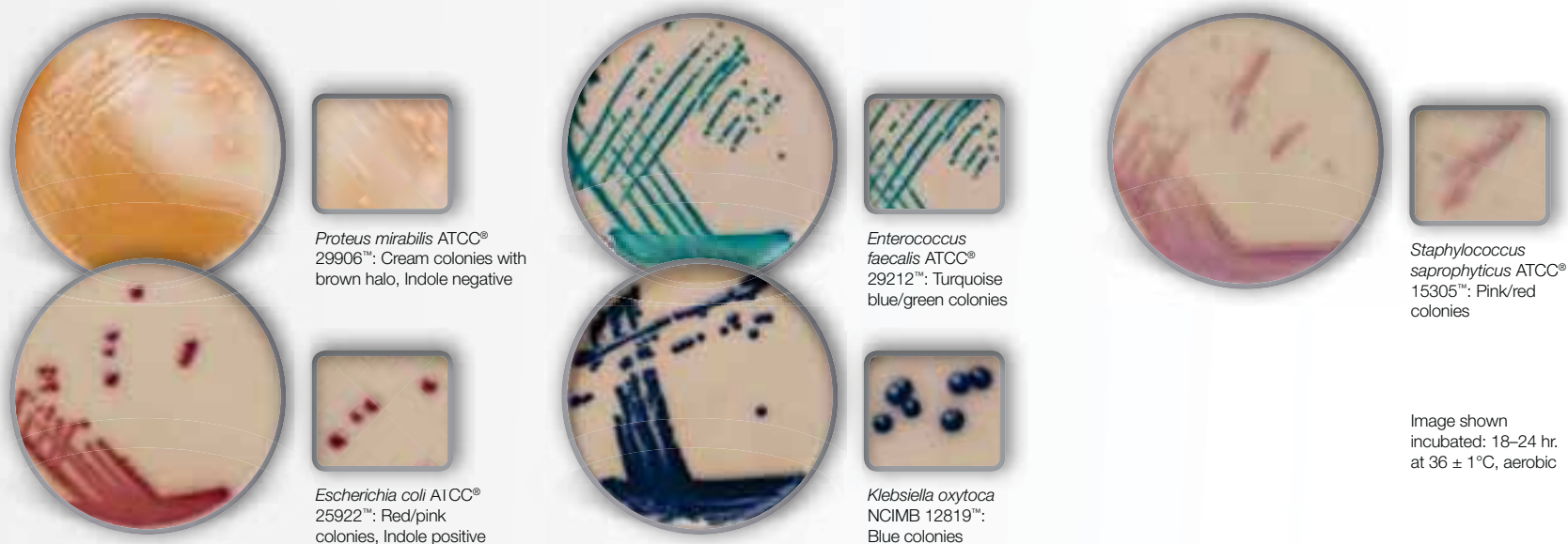
Staphylococcus
saprophyticus
ATCC® 15305™:
Pink/red colonies

Image shown
incubated: 18–24 hr.
at 36 ± 1°C, aerobic

Product Code	Format
PO5159A**	90mm Plates
PO1110A*	90mm Plates

Brilliance UTI Agar

Brilliance UTI Agar is a reliable and rapid tool for the presumptive identification of urinary pathogens in 18 to 24 hours. The medium differentiates between coliforms and enterococci. Improved TDA reaction aids the identification of *Proteus*, *Morganella* and *Providencia* spp. Presumptive identification of *Escherichia coli* can be confirmed using a rapid indole test (DMAC) for same day results. Brilliance UTI Agar helps to identify key organisms for UTI infections through distinctive colour reaction; *Staphylococcus saprophyticus* grows in a different colour from staphylococci.



Product Code	Format
PO5120A**	90mm Plates
PO0794A*	90mm Plates

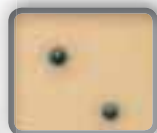
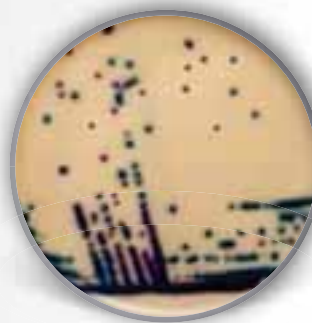
* UK ** Mainland Europe
Product codes are valid for all countries, except USA, unless stated otherwise.

Brilliance Chromogenic Media (Clinical)

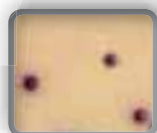


Brilliance VRE Agar

A chromogenic screening plate for the detection of vancomycin-resistant enterococci (VRE). The medium provides presumptive identification of *Enterococcus faecium* and *Enterococcus faecalis* in different target colours, direct from clinical samples in 24 hours. The high selectivity of the medium ensures growth of clinically relevant VRE.



Enterococcus faecalis NCTC 12201: Light blue colonies



Enterococcus faecium NCTC 12202: Indigo-purple colonies

Image shown incubated: 18–24 hr. at 35–39°C, aerobic

Product Code	Format
PO1175A	90mm Plates

Bottles

Liquid media as an alternative method to direct plating method.

Contrast MRSA Broth

A screening medium for the detection of MRSA direct from clinical samples, including ciprofloxacin sensitive strains. Direct inoculation from sample and sample pooling from one patient is possible. A colour change from red to orange/yellow indicates a presumptive positive result.

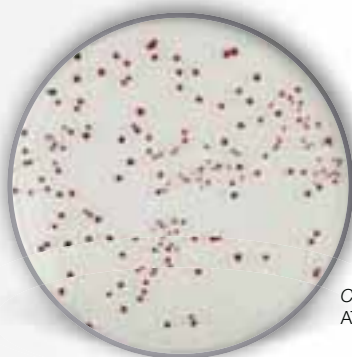
Product Code	Format
EB1225B	100x3 mL, Universal – 1 oz. Straight walled



Brilliance Chromogenic Media (Food)

Brilliance CampyCount Agar

A medium specifically designed for accurate, specific and easy enumeration of *Campylobacter jejuni* and *Campylobacter coli* from poultry and related samples. The transparent medium on which *Campylobacter* produces distinct dark red colonies makes identification and enumeration of *Campylobacter* significantly easier than on traditional charcoal or blood-containing agar. The transparent medium also allows enumeration using plate readers.



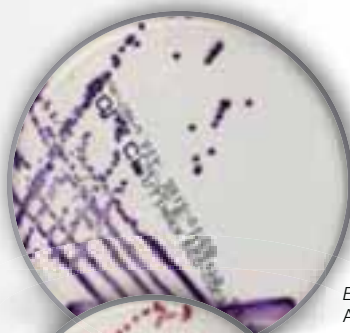
Campylobacter jejuni
ATCC® 33291™

Image shown
incubated: 40–48 hr. at
42 ± 1°C, microaerobic

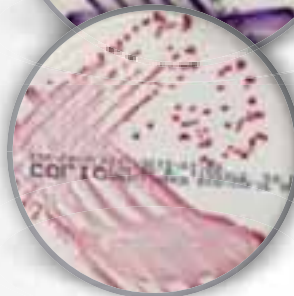
Product Code	Format
PO1185A	90mm Plates

Brilliance Escherichia coli / Coliform Selective Agar

A differential agar used for the presumptive identification of *Escherichia coli* and coliforms from food, environmental and water samples. The agar base uses two chromogens to differentiate between *Escherichia coli* and other coliforms.



Escherichia coli
ATCC® 25922™



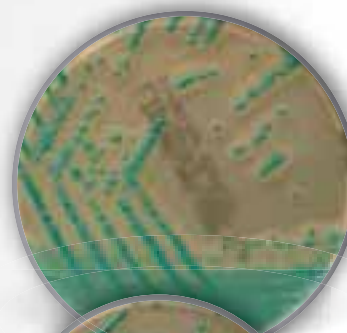
Citrobacter freundii
ATCC® 8090™

Image shown
incubated: 18–24 hr.
at 36 ± 1°C, aerobic

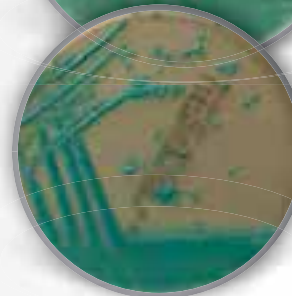
Product Code	Format
PO5176A	90mm Plates

Brilliance Listeria Agar

A medium for selective growth and differentiation of *Listeria monocytogenes* and *Listeria spp.* in food samples. *Brilliance Listeria Agar* can be used with ONE Broth™ *Listeria* Precip method for results within two days instead of three to five days (NF validation by AFNOR according to ISO16140 standard method).



Listeria monocytogenes
ATCC® 13932™



Listeria innocua
ATCC® 33090™

Image shown
incubated: 40–48 hr.
at 36 ± 1°C, aerobic

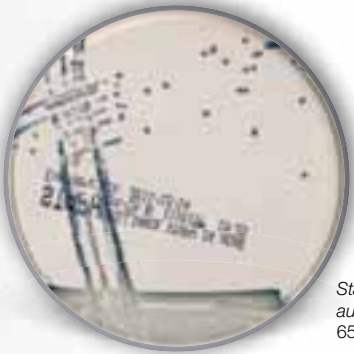
Product Code	Format
PO5165A**	90mm Plates
PO1102A*	90mm Plates

* UK ** Mainland Europe
Product codes are valid for all countries, except USA, unless stated otherwise.

Brilliance Chromogenic Media (Food)

Brilliance Staph 24 Agar

A selective chromogenic medium for the isolation and enumeration of coagulase-positive staphylococci in foods within 24 hours. Coagulase-positive staphylococci (CPS) grow as dark blue colonies on a clear background, making it much easier to read than existing Baird Parker Agar formulations. A result is achieved in 24 hours, far quicker than the 48 hours required for Baird Parker Egg Yolk Tellurite Agar (BP-EYT). Selective agents have been carefully designed to inhibit the growth of Gram-negative flora and non-target Gram-positive organisms. The chromogen is specifically activated by CPS, which colours positive colonies dark blue, while coagulase-negative staphylococci are inhibited or remain colourless.



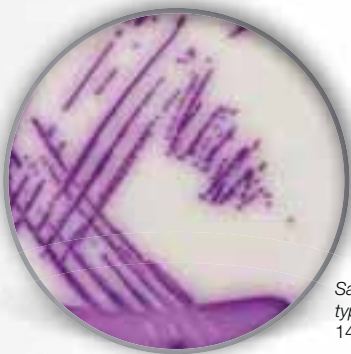
Staphylococcus aureus ATCC® 6538™

Image shown incubated: 20–24 hr. at 36 ± 1°C, aerobic

Product Code	Format
PO1186A	90mm Plates

Brilliance Salmonella Agar

A selective medium for the presumptive identification of *Salmonella* spp. Brilliance Salmonella Agar contains Inhibigen technology, which ensures high selectivity of the medium. *Escherichia coli* is inhibited and overgrowth of the target organism is avoided. For food testing Brilliance Salmonella Agar can be used together with ONE Broth Salmonella obtaining results within two days instead of three to five days (NF validation by AFNOR according to ISO16140 standard method).



Salmonella typhimurium ATCC® 14028™

Image shown incubated: 22–26 hr. at 36 ± 1°C, aerobic

Product Code	Format
PO5098A	90mm Plates



Diluents, Water and Peptones

A broad range of diluents, waters and peptones used for the preparation of microbial suspensions.

Bottles

0.1% Peptone Water

Product Code	Format
BO0833Z	10x300 mL, DIN – Wide neck bottle with septum
BO0619M	100x10 mL, Sirop – Screw cap bottle
BO0619X	10x300 mL, Sirop – Screw cap bottle

0.1% Peptone Water with 0.85% Salt

BO0471D	24x9 mL, Universal – 1 oz. Straight walled
BO0647M	10x100 mL, Sirop – Screw cap bottle

0.9% Saline

BO0334B	24x3 mL, Bijou – 1/4 oz. Straight walled
EB0334B	200x3 mL, Bijou – 1/4 oz. Straight walled
BO0334E	24x10 mL, Universal – 1 oz. Straight walled

Alkaline Peptone Water

BO0335E	24x10 mL, Universal – 1 oz. Straight walled
---------	---

Buffered Peptone Water

BO0201S	Buffered Peptone Water
BO0688S	Buffered Peptone Water
BO0201Z	Buffered Peptone Water

Lactose Peptone Water

BO0435B	24x3 mL, Bijou – 1/4 oz. Straight walled
---------	--

Maximum Recovery Diluent

BO0348Z	10x90 mL, Sirop – Screw cap bottle
BO0348V	10x500 mL, Sirop – Screw cap bottle
BO0348D	24x9 mL, Universal – 1 oz. Straight walled

Neutralising Solution

BO0092E	24x10 mL, Universal – 1 oz. Straight walled
---------	---

Peptone Water

Product Code	Format
EB0208B	200x3 mL, Bijou – 1/4 oz. Straight walled
BO0208E	24x10 mL, Universal – 1 oz. Straight walled
BO0208D	24x9 mL, Universal – 1 oz. Straight walled
BO0208B	24x3 mL, Bijou – 1/4 oz. Straight walled

Phosphate Buffered Saline

BO0971M	10x100 mL, Sirop – Screw cap bottle
BO0971D	24x9 mL, Universal – 1 oz. Straight walled

Purified Water

EB0209B	200x3 mL, Bijou – 1/4 oz. Straight walled
BO0209M	10x100 mL, Sirop – Screw cap bottle
BO0209E	24x10 mL, Universal – 1 oz. Straight walled
EB0209C	200x5 mL, Universal – 1 oz. Straight walled
BO0209C	24x5 mL, Bijou – 1/4 oz. Straight walled
BO0209B	24x3 mL, Bijou – 1/4 oz. Straight walled
BO0209R	10x100 mL, Sirop – Screw cap bottle

Purified Water in Screw Top Tube

BO0184B	300x3 mL, Tube with screw cap
---------	-------------------------------

Ringers Solution 1/4 Strength

EB0332D	100x9 mL, Universal – 1 oz. Straight walled
BO0332D	24x9 mL, Universal – 1 oz. Straight walled

Tryptone Water

BO0383C	24x5 mL, Bijou – 1/4 oz. Straight walled
BO0383B	24x3 mL, Bijou – 1/4 oz. Straight walled

Dip-Slides

A plastic slide coated with an even layer of agar on both sides. This allows two tests to be performed at one time and increases the detection potential of the method. A flexible hinge between the handle and the slide itself allows the entire surface of the medium to be gently and evenly pressed onto the area to be tested. Dip-Slides™ are used in clinical and industrial applications.

Dip-Slides for clinical use

For growth and identification of most of the bacteria likely to cause urinary tract infection.

CLED / MacConkey

Product Code	Format
GDF01A^	10 Slides
DS0103A	10 Slides

CLED / MacConkey Agar No. 3

DS0120A	10 Slides
---------	-----------

CLED / MacConkey / Malt Extract with Chloramphenicol

GFD02A^	10 Slides
---------	-----------

CLED / MacConkey / Cetrimide

GFD03A^	10 Slides
---------	-----------

Dip-Slides for industrial use

Ready Prepared Media on Dip-Slides, ideal for the monitoring of surfaces, oil and water emulsions. The flexible format allows control of difficult areas.

Plate Count Agar / MacConkey Agar No. 3

For total and coliform bacterial count.

Product Code	Format
DS0166A	10 Slides

Plate Count Agar / MacConkey Agar No. 3 (with Inhibitors)

For total and coliform bacterial count with added germicide inhibitors.

DS0167A	10 Slides
---------	-----------

Plate Count Agar / OGYE Agar

For the total aerobic count, and total yeast and mould count.

DS0170A	10 Slides
---------	-----------

Plate Count Agar / Plate Count Agar

For total bacterial count.

GFD07A^	10 Slides
---------	-----------

Plate Count Agar / Violet Red Bile Glucose Agar

For total and Enterobacteriaceae bacterial count.

GFD06A^	10 Slides
DS0168A	10 Slides

Plate Count Agar / Violet Red Bile Glucose Agar (with Inhibitors)

For total and Enterobacteriaceae bacterial count with added germicide inhibitors.

Product Code	Format
DS0169A	10 Slides

Plate Count / MacConkey with MUG

For total and coliform / *Escherichia coli* bacterial count. The fluorescent agent MUG is added for the detection of *Escherichia coli*.

GFD05A^	10 Slides
---------	-----------

Tryptone Soya Agar (Caso) / Malt Extract with Chloramphenicol

For the total aerobic count, and total yeast and mould count.

GFD04A^	10 Slides
---------	-----------

TTC (Red Spot)

For the total count of aerobic bacteria.

DS0147A	10 Slides
---------	-----------

TTC (Red Spot) / Malt Extract Agar

For the total aerobic count, and total yeast and mould count.

DS0155A	10 Slides
---------	-----------

^ Germany only

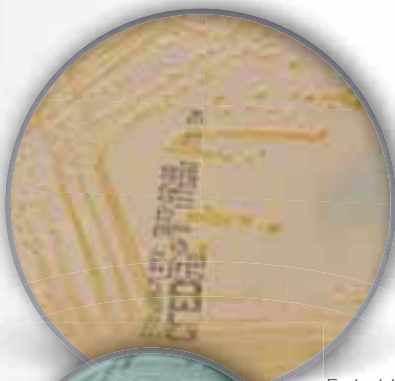
Product codes are valid for all countries, except USA, unless stated otherwise. Alternative products may be available in your country; please contact your local sales office for further details.

General Purpose Media

Broad range of general purpose media help to identify organisms that play an important role in different applications.

CLED Medium

This traditional urinary bacteriology medium supports the growth of all urinary pathogens and provides good colonial differentiation with clear diagnostic characteristics. The presence of important contaminants, such as diptheroids, lactobacilli and micrococci is also clearly elicited, giving an indication of the degree of contamination. In the laboratory, CLED Medium provides a valuable non-inhibitory diagnostic agar for plate culture of urinary organisms. It is electrolyte deficient to prevent the swarming of *Proteus spp.*



Escherichia coli
ATCC® 25922™



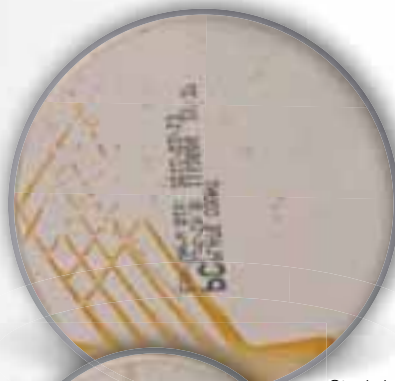
Proteus vulgaris
ATCC® 8427™

Image shown
incubated: 18–24 hr.
at 36 ± 1°C, aerobic

Product Code	Format
PO5009A**	90mm Plates
PO0120A*	90mm Plates

Plate Count Agar

A standard medium that meets the formulation of APHA, AOAC and PHLS for the enumeration of viable organisms in milk, water, food and dairy products.



Staphylococcus aureus
ATCC® 6538™



Escherichia coli
ATCC® 25922™

Image shown
incubated: 18–72 hr.
at 30 ± 1°C, aerobic

Product Code	Format
PO5013A**	90mm Plates
PO0158A*	90mm Plates

Tryptone Soya Agar

Tryptone Soya Agar, also known as Casein Soya Bean Digest Agar, is a general purpose medium specified in various pharmacopoeia and food testing methods for the growth of a wide variety of organisms. It is suitable for the cultivation of both aerobes and anaerobes, the latter being grown either in deep cultures or by incubation under anaerobic conditions.



Staphylococcus aureus
ATCC® 33591™

Image shown
incubated: Up to 3
days at 32 ± 1°C for
bacteria, and 7 days for
yeasts and moulds

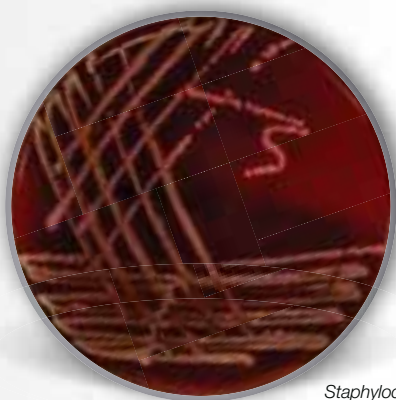
Product Code	Format
PO5012A**	90mm Plates
PO0163A*	90mm Plates

* UK ** Mainland Europe
Product codes are valid for all countries, except USA, unless
stated otherwise.

General Purpose Media

Tryptone Soya Agar with Sheep Blood

This general purpose agar medium, which will support the growth of a wide variety of organisms, contains blood for the determination of haemolysis as a diagnostic tool.



Staphylococcus aureus
ATCC® 33591™

Image shown
incubated: 18–24 hr.
at 36 ± 1°C, aerobic

Product Code	Format
PB5012A	90mm Plates

CLED Medium with Andrade Indicator

Product Code	Format
PO0121A	90mm Plates

Columbia Agar Base

PO0537A	90mm Plates
---------	-------------

Columbia Agar Base with 2% Salt (4mm Depth)

PO0879A	90mm Plates
---------	-------------

Columbia Agar with 5% Salt

PO0415A	90mm Plates
---------	-------------

Nutrient Agar

PO0155A	90mm Plates
---------	-------------

Nutrient Agar with 5% Salt

PO0156A	90mm Plates
---------	-------------

R2A Agar

PO0659A	90mm Plates
---------	-------------

Sabouraud Dextrose Agar

PO0160A	90mm Plates
---------	-------------

Tryptone Soya Agar (25mL)

PO5073A	90mm Plates
---------	-------------

Tryptone Soya Agar with Disinhibitor

PO5095A	90mm Plates
---------	-------------

Tryptone Soya Agar with Yeast Extract (TSYE)

PO5050A	90mm Plates
---------	-------------

Contact Plates

Thermo Scientific contact plates have a dome shaped bottom that prevents the agar from falling out of the dish. They are easy to handle, have an improved lid-lock and an inner layer counting grid, and are easily stacked. The ventilation is reduced to prevent plates from drying out.

Columbia Agar with Sheep Blood

Contact plate for the enumeration of colony counts on surfaces. Provides an improved all-round performance with rapid production of large colonies and good colony differentiation.



Staphylococcus aureus
ATCC® 33591™

Image shown
incubated: 18–24 hr.
at 36 ± 1°C, aerobic

Product Code	Format
PB5084C	55mm Contact Plates

* UK ** Mainland Europe
Product codes are valid for all countries, except USA, unless stated otherwise.

TSA with Disinhibitor

For the enumeration of colony counts on surfaces after cleaning and disinfection. Lecithin and polysorbate 80 are added to neutralise surface disinfectants to aid organism recovery.



Staphylococcus aureus
ATCC® 33591™

Image shown
incubated: Up to 3
days at 32 ± 1°C

Product Code	Format
PO5024C**	55mm Contact Plates
PO0193C*	55mm Contact Plates

Pro-Tect Agar

Product Code	Format
PO0678D	55mm Contact Plates, Triple wrapped, Irradiated

Sabouraud Dextrose Agar

Product Code	Format
PO0192C	90mm Plates

Tryptone Soya Agar

PO0262D**	55mm Contact Plates, Triple wrapped, Irradiated
PO0193C*	55mm Contact Plates, Triple wrapped, Irradiated

TSA with Disinhibitor PLUS

PO5172C	55mm Contact Plates
PO5171D	55mm Contact Plates, Triple wrapped, Irradiated

Tubes

Media in tubes for general purpose.

Brain Heart Infusion Broth

Product Code	Format
TV5090E	50x10 mL, Tube with screw cap

Nutrient Broth with Glucose

TV5003D	50x9 mL, Tube with screw cap
---------	------------------------------

Nutrient Slant Agar

TV5011Z	50x7.5 mL, Tube with screw cap
---------	--------------------------------

Tryptone Soya Broth (EP / USP)

TV5002E	50x10 mL, Tube with screw cap
---------	-------------------------------

General Purpose Media

Bottles

Media in bottles for general purpose.

Brain Heart Infusion Broth

Product Code	Format
BO0366D	24x9 mL, Universal – 1 oz. Straight walled
BO1230M	10x100 mL, Sirop – Screw cap bottle
BO1230D	24x9 mL, Universal – 1 oz. Straight walled
BO1230B	24x3 mL, Bijou – 1/4 oz. Straight walled

Brain Heart Infusion Broth with 10% Serum

BO1229E	24x10 mL, Universal – 1 oz. Straight walled
---------	---

Columbia Agar with Chocolate Horse Blood (Slope)

BO0341B	24x3 mL, Bijou – 1/4 oz. Straight walled
---------	--

Cooked Meat Medium

EB0212E	100x10 mL, Universal – 1 oz. Straight walled
BO0212E	24x10 mL, Universal – 1 oz. Straight walled

Nutrient Agar (Slope)

EB0336B	200x3 mL, Bijou – 1/4 oz. Straight walled
BO0336E	24x10 mL, Universal – 1 oz. Straight walled
BO0336B	24x3 mL, Bijou – 1/4 oz. Straight walled

Nutrient Broth

BO0210E	24x10 mL, Universal – 1 oz. Straight walled
BO0210B	24x3 mL, Bijou – 1/4 oz. Straight walled

Nutrient Broth with 7.5% Salt

Product Code	Format
EB0424E	100x10 mL, Universal – 1 oz. Straight walled
BO0424E	24x10 mL, Universal – 1 oz. Straight walled
BO0424B	24x3 mL, Bijou – 1/4 oz. Straight walled

Plate Count Agar

BO0195V	10x500 mL, Sirop – Screw cap bottle
BO0195T	10x250 mL, Sirop – Screw cap bottle

Tryptone Soya Agar

BO0330V	10x500 mL, Sirop – Screw cap bottle
BO0330T	10x250 mL, Sirop – Screw cap bottle
BO0330M	10x100 mL, Sirop – Screw cap bottle

Tryptone Soya Agar (Slope)

BO0405F	24x15 mL, Universal – 1 oz. Straight walled
---------	---

Tryptone Soya Broth (EP / USP)

BO0509V	10x500 mL, DIN – Wide neck bottle with septum
BO0509M	10x100 mL, DIN – Wide neck bottle with septum
BO0369M	10x100 mL, Vial – Narrow neck with septum
BO0369E	24x10 mL, Vial – Narrow neck with septum
BO0369A	24x2 mL, Vial – Narrow neck with septum
BO0351U	10x90 mL, Sirop – Screw cap bottle
BO0351M	10x100 mL, Sirop – Screw cap bottle
BO0351G	24x20 mL, Universal – 1 oz. Straight walled
BO0351E	24x10 mL, Universal – 1 oz. Straight walled
BO0351R	10x100 mL, Sirop – Screw cap bottle

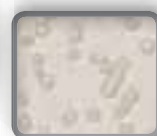


Pharmaceutical Media

The bacterial load of air, surfaces and personnel in clean rooms are monitored using a set of standard media. Monitoring microbial and particle counts is part of good manufacturing practices. This section lists irradiated and triple wrapped plates for specific applications in clean room atmospheres.

Sabouraud Dextrose Agar

An acidic pH medium for the isolation of dermatophytes, other fungi and yeasts. The triple wrapped irradiated packaging allows use in clean rooms.



Candida albicans
ATCC® 10231™

Image shown
incubated: 5 days at
20–24°C

Product Code	Format
PO0410B	90mm Plates, Triple wrapped, Irradiated

* UK ** Mainland Europe
Product codes are valid for all countries, except USA, unless
stated otherwise.

Tryptone Soya Agar (Deep Fill)

Product Code	Format
PO5012B**	90mm Plates, Triple wrapped, Irradiated
PO0821B*	90mm Plates, Triple wrapped, Irradiated

Tryptone Soya Agar

PO0306T	140mm Plates, Triple wrapped, Irradiated
---------	---

Contact Plates

Pro-Tect Agar

Product Code	Format
PO0678D	55mm Contact Plates, Triple wrapped, Irradiated

Sabouraud Dextrose Agar

PO0394D	55mm Contact Plates, Triple wrapped, Irradiated
---------	--

Tryptone Soya Agar

PO0262D	55mm Contact Plates, Triple wrapped, Irradiated
---------	--

Tryptone Soya Agar with Tween and Lecithin

PO0479D	55mm Contact Plates, Triple wrapped, Irradiated
---------	--

TSA with Disinhibitor PLUS

PO5171D	55mm Contact Plates, Triple wrapped, Irradiated
---------	--

Bottles

Liquid media for specific pharmaceutical applications.

0.1% Peptone Water

Product Code	Format
BO0833M	10x100 mL, DIN – Wide neck bottle with septum
BO0833Z	10x300 mL, DIN – Wide neck bottle with septum
BO0833V	10x500 mL, DIN – Wide neck bottle with septum

0.1% Peptone Water with 1% Tween

BO0293M	10x100 mL, Sirop – Screw cap bottle
BO0293Z	10x300 mL, Sirop – Screw cap bottle
BO0964V	10x500 mL, DIN – Wide neck bottle with septum

Buffered Sodium Chloride Peptone Solution (EP / USP / JP)

BO0322M	10x100 mL, Sirop – Screw cap bottle, Non-irradiated
BO0322D	24x9 mL, Universal – 1 oz. Straight walled

Enterobacteria Enrichment Broth Mossel (EP / USP / JP / BP)

BO1156E	24x10 mL, Universal – 1 oz. Straight walled
BO1156J	10x90 mL, Sirop – Screw cap bottle
BO1156M	10x100 mL, Sirop – Screw cap bottle

Pharmaceutical Media

MacConkey Broth (EP / USP / JP / BP)

Product Code	Format
--------------	--------

BO1124M	10x100 mL, Sirop – Screw cap bottle
---------	-------------------------------------

Reinforced Clostridial Medium (EP / USP / JP / BP)

BO1158M	10x100 mL, Sirop – Screw cap bottle
---------	-------------------------------------

RVS Enrichment Broth MLT (EP / USP / JP / BP)

BO1121E	24x10 mL, Universal – 1 oz. Straight walled
---------	---

Sabouraud Dextrose Agar pH 5.6 (EP / USP / JP / BP)

BO1155M	10x100 mL, Sirop – Screw cap bottle
---------	-------------------------------------

BO1155T	10x250 mL, Sirop – Screw cap bottle
---------	-------------------------------------

BO1155Z	10x450 mL, Sirop – Screw cap bottle
---------	-------------------------------------

Sabouraud Dextrose Broth (EP / USP / JP / BP)

BO0283M	10x100 mL, Sirop – Screw cap bottle
---------	-------------------------------------

Thioglycollate Medium (EP / USP)

BO0368M	10x100 mL, Vial – Narrow neck with septum
---------	---

BO0510M	10x100 mL, DIN – Wide neck bottle with septum
---------	---

BO0510V	10x500 mL, DIN – Wide neck bottle with septum
---------	---

Tryptone Soya Broth (EP / USP)

BO0369A	24x2 mL, Vial – Narrow neck with septum
---------	---

BO0369E	24x10 mL, Vial – Narrow neck with septum
---------	--

BO0369M	10x100 mL, Vial – Narrow neck with septum
---------	---

BO0509M	10x100 mL, DIN – Wide neck bottle with septum
---------	---

BO0509V	10x500 mL, DIN – Wide neck bottle with septum
---------	---

Tubes

Thioglycollate Medium (EP / USP)

Product Code	Format
--------------	--------

TV5001D	50x9 mL
---------	---------

Harmonised Media

Cetrimide Agar

PO1168A	90mm Plates
---------	-------------

MacConkey Agar

PO1142A	90mm Plates
---------	-------------

Mannitol Salt Agar

PO1169A	90mm Plates
---------	-------------

Potato Dextrose Agar

PO0186A	90mm Plates
---------	-------------

Sabouraud Dextrose Agar

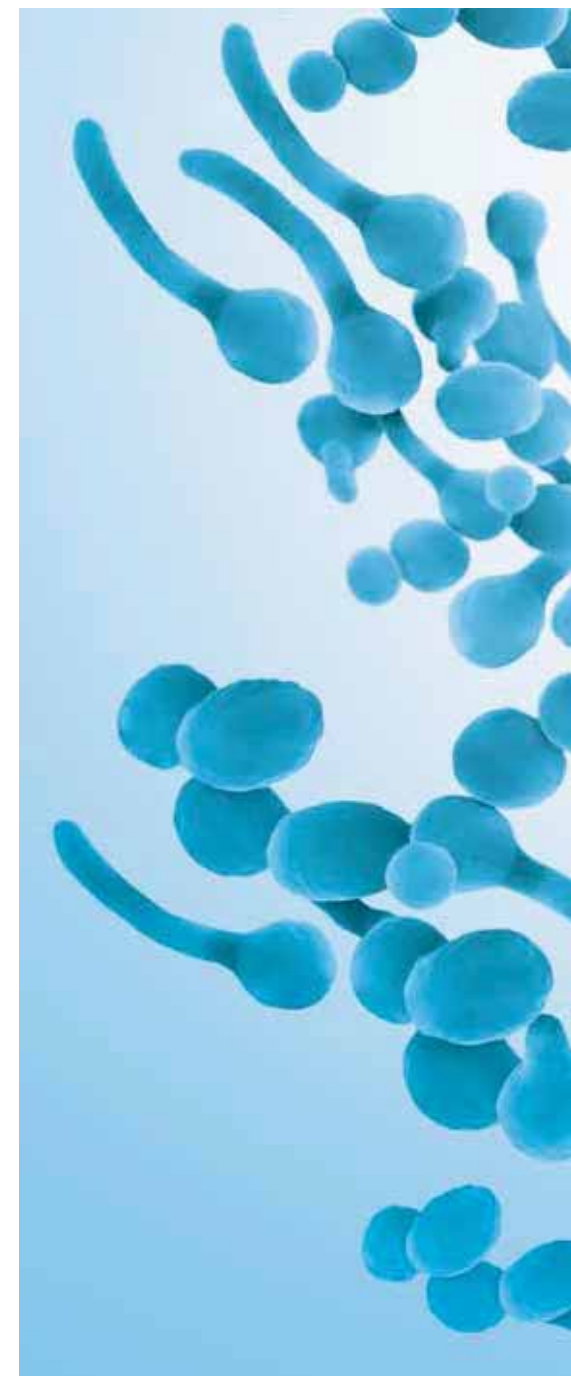
PO1166A	90mm Plates
---------	-------------

Violet Red Bile Glucose Agar

PO1167A	90mm Plates
---------	-------------

X.L.D. Agar

PO1132A	90mm Plates
---------	-------------



Pharmaceutical Media

BioProcess Containers (BPCs)

Cold Filterable Tryptone Soya Broth

Product Code	Format
BP1065A	1L
BP1065C	10L
BP1065E	20L

Cold Filterable Vegetable Peptone Broth

BP0104A	1L
BP0104C	10L
BP0104E	20L

BPC Tubing Connectors

ReadyMate to 2X ReadyMate

Product Code	Format
BP0070A	Each

ReadyMate to Female KPC

BP0040A	Each
---------	------

ReadyMate to Male KPC

BP0030A	Each
---------	------

ReadyMate to Female Lynx

BP0020A	Each
---------	------

ReadyMate to Male Lynx

Product Code	Format
BP0010A	Each

ReadyMate to Female Opta

BP0060A	Each
---------	------

ReadyMate to Male Opta

BP0050A	Each
---------	------

ReadyMate to Steam-Thru

BP0080A	Each
---------	------

Triple Wrapped Irradiated Plates

Triple Wrap Sterile Pack w/VHP Indicator Sabouraud Dextrose Agar

Product Code	Format
PO5502B	90mm Settling Plates, 2x5
PO5512D	55mm Contact Plates, 2x5

Triple Wrap Sterile Pack w/VHP Indicator Sabouraud Dextrose Agar w/Lecithin, Polysorbate 80, Sodium Thiosulphate, L-Histidine

PO5503B	90mm Settling Plates, 2x5
PO5513D	55mm Contact Plates, 2x5

Triple Wrap Sterile Pack w/VHP Indicator Tryptone Soya Agar

Product Code	Format
PO5500B	90mm Settling Plates, 2x5
PO5510D	55mm Contact Plates, 2x5

Triple Wrap Sterile Pack w/VHP Indicator Tryptone Soya Agar w/Lecithin, Polysorbate 80, Sodium Thiosulphate, L-Histidine

PO5501B	90mm Settling Plates, 2x5
PO5511D	55mm Contact Plates, 2x5

ReadyBags

ReadyBags™ are designed for use in food testing by laboratories with large numbers of samples requiring large volumes of broth media or diluent. Each ReadyBag contains 3 litres and is intended for use with an automatic dispenser. The ReadyBag is connected to tubing for standard laboratory equipment, such as gravimetric diluters or peristaltic pumps, by means of a connector. Connectors are available in two formats: autoclavable, re-usable stainless steel connectors or sterile, plastic, single-use connectors. Once empty, the bag can be disposed as normal laboratory waste.

Buffered Peptone Water

Product Code	Format
BM0104T	4x3L
FR59102	3x3L

Buffered Peptone Water (ISO)

BM1104T	4x3L
FR60171	3x3L

Half Fraser

FR59562	3x3L
---------	------

Maximum Recovery Diluent

BM0204T	4x3L
---------	------

ONE Broth Listeria

FR60031	3x3L
---------	------

ONE Broth Salmonella

FR60101	3x3L
---------	------

Peptone Selective

FR59772	3x3L
---------	------

Bag Accessories

Bag accessories to use in combination with ReadyBags.

Bag Connectors (Disposable)

Product Code	Format
BM9925A	25

Bag Connectors (Stainless Steel)

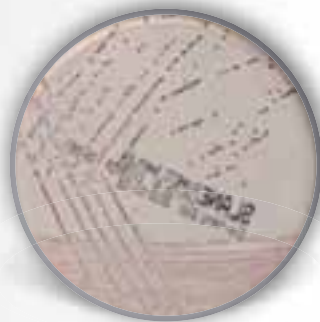
BM9901A	Each
---------	------

Water Testing

Media for routine screening procedures to estimate the number of bacteria present. When indicator organisms exceed acceptable levels, specific analysis for pathogens may be undertaken and can be quickly detected using specific culture methods.

Slanetz and Bartley Medium (Enterococcus Agar)

A medium for the detection of enterococci. The medium is very selective for enterococci and incubated at elevated temperatures (44–45°C). All red or maroon colonies may be accepted as presumptive enterococci.



Enterococcus faecalis ATCC® 29212™

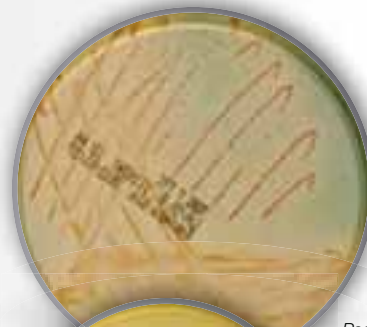
Image shown
incubated: 40 hr. at
36 ± 1°C, aerobic

Product Code	Format
PO5018A**	90mm Plates
PO0271A*	90mm Plates

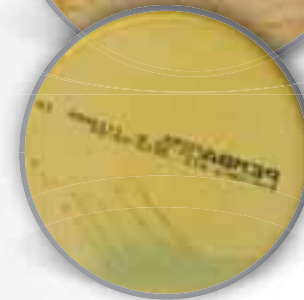
* UK ** Mainland Europe
Product codes are valid for all countries, except USA, unless stated otherwise.

Tergitol 7-Lactose-TTC Agar

A medium for the enumeration of coliforms in food and water. The addition of tri-phenyltetrazolium chloride (TTC) allows earlier recognition and identification of *Escherichia coli* and *Enterobacter aerogenes*. Tergitol-7 inhibits Gram-positive organisms and minimises the swarming of *Proteus* allowing superior recovery of coliforms. This leads to fewer false positive results and confirmatory testing.



Pseudomonas aeruginosa ATCC® 27853™



Escherichia coli ATCC® 25922™

Image shown
incubated: 18–24 hr.
at 36 ± 1°C, aerobic

Product Code	Format
PO5164A	90mm Plates
PO5411J	55mm Plates

Water Testing

Pseudomonas C-N Selective Agar (Cetrimide Agar)

For more information please refer to section: *Pseudomonas* (page number 53)

Product Code	Format
PO5076A**	90mm Plates
PO0185A*	90mm Plates

Enterococcus Selective Agar (BAA) Bile Aesculin Azide Agar

For more information please refer to section: Enterococci (page number 47)

PO5062A	90mm Plates
---------	-------------

Kanamycin Aesculin Azide Selective Medium

PO5059A	90mm Plates
---------	-------------

Legionella BCYEa Medium

PO5072A	90mm Plates
---------	-------------

Legionella BCYE-Agar W/O L-Cysteine

PO5028A**	90mm Plates
PO0255A*	90mm Plates

Legionella GVPC Selective Medium

For more information please refer to section: Legionella (page number 51)

PO5074A**	90mm Plates
PO0245A*	90mm Plates

Membrane Clostridium Perfringens (mCP) Agar

For more information please refer to section: *Clostridium* species (page number 39)

PO5163A	90mm Plates
---------	-------------

Nutrient Agar

Product Code	Format
PO5025A**	90mm Plates
PO0155A*	90mm Plates

R2A Agar

PO5149A**	90mm Plates
PO0659A*	90mm Plates

Contact Plates

Tergitol 7-Lactose-TTC Medium

Product Code	Format
PO5411J	55mm Contact Plates

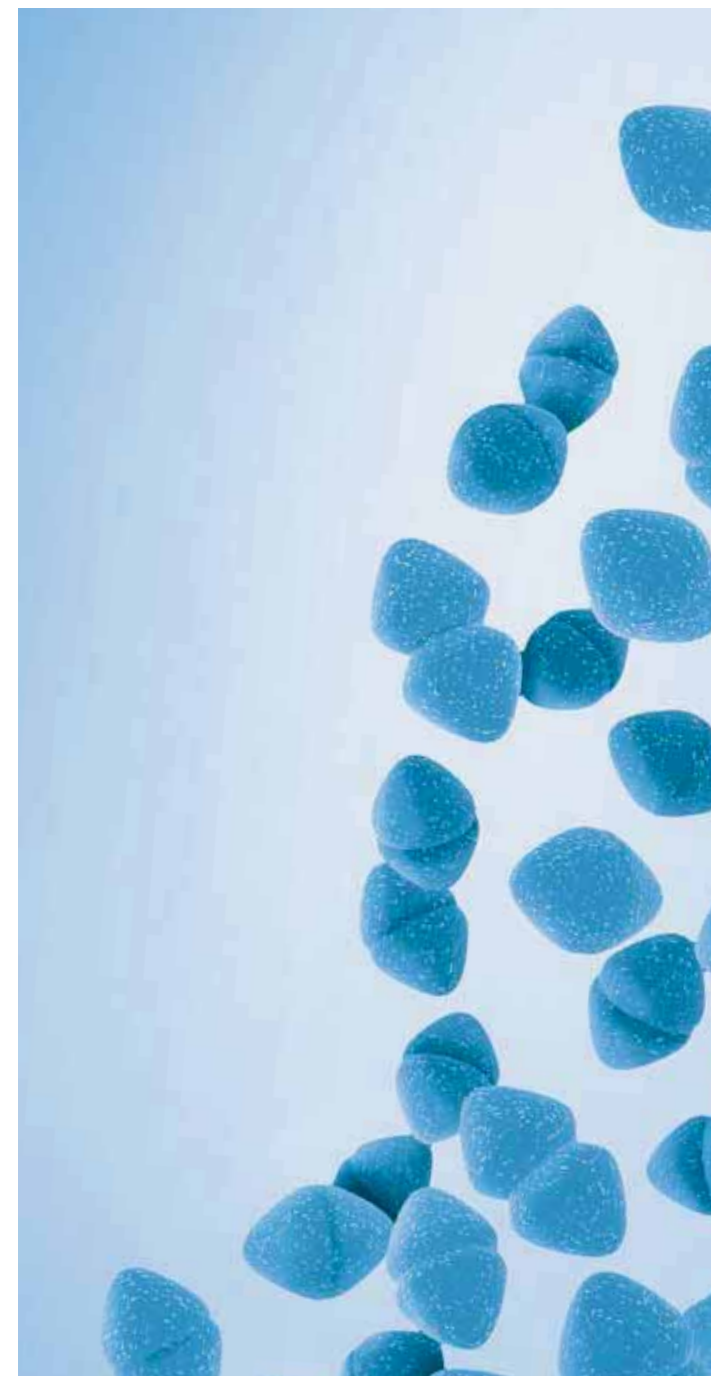
Bottles

Minerals Modified Glutamate (Durham Tube)

Product Code	Format
BO0541E	24x10 mL, Universal – 1 oz. Straight walled

Minerals Modified Glutamate X2 Strength (Durham Tube)

BO0542E	24x10 mL, Universal – 1 oz. Straight walled
---------	---



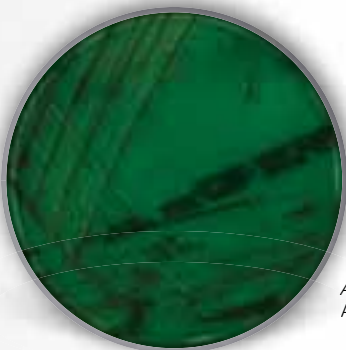


Culture Media **by Organism Type**

Aeromonas

Aeromonas Medium

A selective diagnostic medium for the isolation of *Aeromonas hydrophila* from clinical and environmental specimens. The medium is specified by the MAFF/ DHS Steering Group on the Microbiological Safety of Food for detection and enumeration of *Aeromonas hydrophila* in clinical specimens.



Aeromonas hydrophila
ATCC® 7966™

Image shown
incubated: 18–24 hr.
at 35–39°C

Product Code	Format
PO0325A	90mm Plates

* UK ** Mainland Europe
Product codes are valid for all countries, except USA, unless stated otherwise.

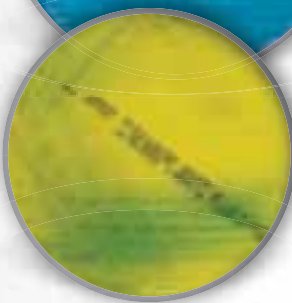
Bacillus cereus

Bacillus cereus Selective Agar (PEMBA)

A selective and diagnostic medium for the isolation and enumeration of *Bacillus cereus*. It is sufficiently selective to be able to detect small numbers of *Bacillus cereus* cells and spores in the presence of large numbers of other food contaminants. The medium is also sufficiently diagnostic that colonies of *Bacillus cereus* are readily identified and confirmed by microscopic examination. Typical *Bacillus cereus* colonies are crenated, about 5mm in diameter with a distinctive turquoise to peacock blue colour surrounded by an egg yolk precipitate of the same colour.



Bacillus cereus
ATCC® 10876™



Bacillus subtilis
ATCC® 6633™

Image shown
incubated: 18–24 hr.
at 32 ± 1°C, aerobic

Product Code	Format
PO5048A**	90mm Plates
PO0167A*	90mm Plates

MYP Agar (Mannitol Egg Yolk Polymyxin Agar)

A selective and differential medium for the enumeration of *Bacillus cereus* in food samples. The diagnostic features of the medium rely upon the failure of *Bacillus cereus* to utilise mannitol and the ability of most strains to produce phospholipase C. The medium is made selective by the addition of Polymyxin B, which will inhibit Gram-negative bacteria. MYP Agar has proved to be very effective for detecting *Bacillus cereus* even for ratios as challenging as one cell of *Bacillus cereus* to 10⁶ cells of other organisms. The formulation conforms to the ISO 7932 standard method.



Bacillus cereus
ATCC® 10876™

Image shown
incubated: 18–24 hr.
at 30 ± 1°C, aerobic
for *Bacillus cereus*

Product Code	Format
PO5133A**	90mm Plates
PO0711A*	90mm Plates

Bordetella

Bordetella Selective Medium

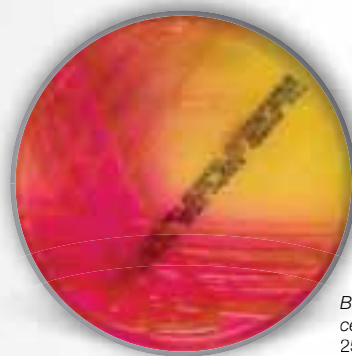
A selective medium for the detection and isolation of *Bordetella pertussis* and *Bordetella parapertussis*. Cephalaxin is added as a selective agent for the isolation of *Bordetella pertussis*. The medium's ability to recover stressed cells and the much longer shelf life are added benefits to its superiority at suppressing unwanted naso-pharyngeal growth.

Product Code	Format
PB5065A	90mm Plates

Burkholderia cepacia

Burkholderia Cepacia Agar

A medium for the selective isolation of *Burkholderia cepacia* from the respiratory secretions of patients with cystic fibrosis and for routine testing of non-sterile inorganic salt solutions containing preservative.



Burkholderia cepacia ATCC® 25416™

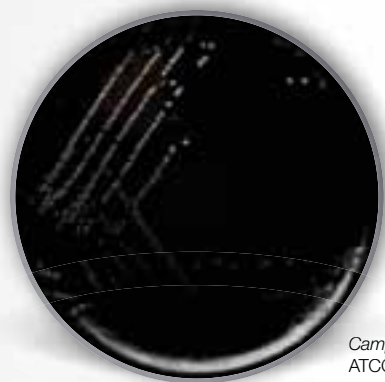
Image shown
incubated: 36–48 hr.
at 35–39°C

Product Code	Format
PO0938A	90mm Plates

Campylobacter

Campylobacter Blood Free Selective Agar (CCDA)

A blood free selective medium for the isolation of *Campylobacter* spp. The medium conforms to ISO 10272-1 and 10272-2 standard method.



Campylobacter jejuni
ATCC® 33291™

Image shown incubated:
40–48 hr. at 42 ± 1°C,
microaerophilic

Product Code	Format
PO5091A**	90mm Plates
PO0119A*	90mm Plates

* UK ** Mainland Europe

Product codes are valid for all countries, except USA, unless stated otherwise.

Brilliance CampyCount Agar

For more information please refer to section: *Brilliance Chromogenic Media* (page number 21)

Product Code	Format
PO1185A	90mm Plates

Campylobacter C.A.T. Agar

PO0839A	90mm Plates
---------	-------------

Campylobacter Selective Agar (Skirrow)

PB0118A*	90mm Plates
----------	-------------

Campylobacter Selective Agar Butzler

PB5006A**	90mm Plates
-----------	-------------

Karmali Selective Medium

PO5041A**	90mm Plates
-----------	-------------

Skirrow Selective Medium

PO5040A**	90mm Plates
-----------	-------------

Bottles

Bolton Broth

BO1070S	Bolton Broth
---------	--------------

Bi-plates

Karmali Selective Medium

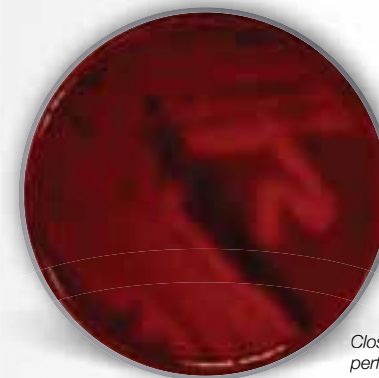
For more information please refer to section: *Bi-plates* (page number 11)

PO5219E	90mm Bi-plate
---------	---------------

Clostridium species

Columbia Blood Agar with Neomycin

A medium useful in the primary isolation of most clinically significant anaerobes. The addition of neomycin inhibits the majority of aerobic and facultative bacteria.



Clostridium perfringens ATCC®
13124™

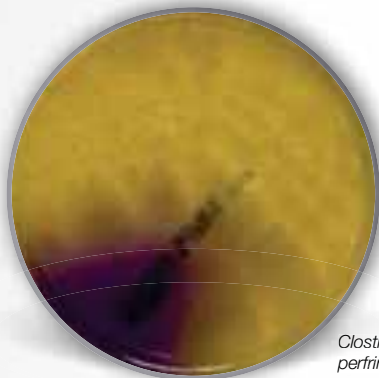
Image shown
incubated: 36–48 hr.
at 36–39°C, anaerobic

Product Code	Format
PB0219A	90mm Plates

Clostridium species

Membrane Clostridium Perfringens (mCP) Agar

A selective and chromogenic medium for the presumptive identification of *Clostridium perfringens* from water samples. Presumptive positive *Clostridium perfringens* colonies can be further tested for acid phosphatase activity by exposure to ammonium hydroxide vapour for 20 to 30 seconds. *Clostridium perfringens* colonies turn pink or red.



Clostridium perfringens ATCC® 13124™

Image shown incubated: 18–24 hr. at 36 ± 1°C, anaerobic

Product Code	Format
PO5163A	90mm Plates

Brazier's Clostridium difficile Selective Medium, Modified

A selective medium for the isolation of *Clostridium difficile*. Brazier's formulation ensures the typical growth of *Clostridium difficile* with the typical odour. The addition of lysed horse blood optimises the recognition of colony fluorescence when cultures are examined using UV light and is easily identified by its fluorescence.

Product Code	Format
PB5191A**	90mm Plates
PB1055A*	90mm Plates

Clostridium difficile Selective Agar

PB0218A	90mm Plates
---------	-------------

Fastidious Anaerobe Agar (F.A.A.) with Horse Blood

PB0225A	90mm Plates
---------	-------------

Fastidious Anaerobe Agar (F.A.A.) with Horse Blood and Gentamicin

PB0252A	90mm Plates
---------	-------------

Fastidious Anaerobe Agar (F.A.A.) with Neomycin

PO0416A	90mm Plates
---------	-------------

Nagler Agar

PO0296A	90mm Plates
---------	-------------

Yeast Extract Cysteine Medium with Sheep Blood (Beerens Formulation)

PB5101A	90mm Plates
---------	-------------

Bottles

Buffered Motility Nitrate Medium

BO1069E	24x10 mL, Universal – 1 oz. Straight walled
---------	--

Lactose Gelatin Medium

BO1068F	24x15 mL, Universal – 1 oz. Straight walled
---------	--

Tubes

TSC Agar Base

TV5204G	50x20 mL
---------	----------

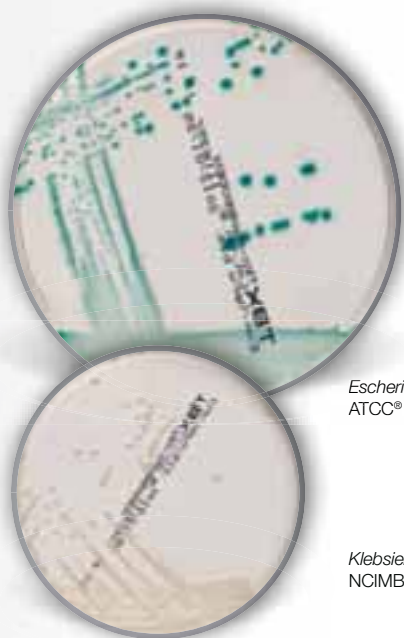
ATCC Licensed Derivative®



Coliforms / *Escherichia coli*

TBX Medium

A chromogenic medium for the detection and enumeration of *Escherichia coli* in food. TBX Medium builds on these advantages through the addition of a chromogenic agent, X-glucuronide, which detects glucuronidase activity. This is the same enzyme detected by MUG reagent and has been shown to be highly specific for *Escherichia coli*. The medium conforms to the ISO 16649-1 and 16649-2.



Escherichia coli
ATCC® 25922™

Klebsiella oxytoca
NCIMB 12819

Image shown
incubated: 18–24 hr.
at 36 ± 1°C, aerobic

Product Code	Format
PO5109A**	90mm Plates
PO0727A*	90mm Plates

Brilliance *Escherichia coli* / Coliform Selective Agar

For more information please refer to section: *Brilliance Chromogenic Media* (page number 21)

Product Code	Format
PO5176A	90mm Plates

China Blue Lactose Agar

PO5060A	90mm Plates
---------	-------------

Membrane Lactose Glucuronide Agar (MLGA)

PO1016A	90mm Plates
---------	-------------

Tubes

Brilliant Green Bile Broth (2%) with Durham Tube

TV5009E	50x10 mL, Tube with screw cap
---------	-------------------------------

E.E. Broth

TV5041E	50x10 mL, Tube with screw cap
---------	-------------------------------

Lauryl Tryptose Broth with MUG and Tryptophan with Durham Tube

TV5079E	50x10 mL, Tube with screw cap
---------	-------------------------------

Bottles

Brilliant Green Bile Broth with Durham Tube

BO0345E	24x10 mL, Universal – 1 oz. Straight walled
---------	--

Brilliant Green Bile Broth with Durham Tube (X2 Strength)

BO0844E	24x10 mL, Universal – 1 oz. Straight walled
---------	--

E.E. Broth

BO0598M	10x100 mL, Sirop – Screw cap bottle
BO0443Z	10x90 mL, Sirop – Screw cap bottle

Membrane Lauryl Sulphate Broth

BO0394E	24x10 mL, Universal – 1 oz. Straight walled
---------	--

MacConkey Broth

BO0550M	10x100 mL, Sirop – Screw cap bottle
---------	--

MacConkey Broth Purple

BO0376M	10x100 mL, Sirop – Screw cap bottle
---------	--

MacConkey Broth Purple (Durham Tube)

BO0347E	24x10 mL, Universal – 1 oz. Straight walled
---------	--

Minerals Modified Glutamate X2 Strength (Durham Tube)

BO0542E	24x10 mL, Universal – 1 oz. Straight walled
---------	--

Violet Red Bile Agar

BO0455M	10x100 mL, Sirop – Screw cap bottle
---------	--

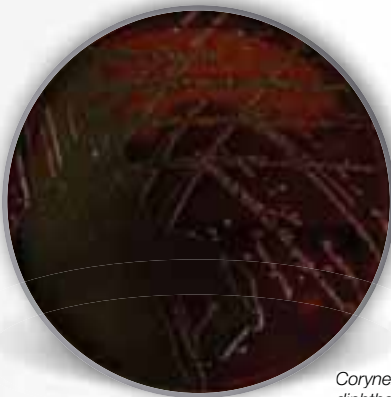
* UK ** Mainland Europe

Product codes are valid for all countries, except USA, unless stated otherwise.

Corynebacteria

Hoyles Medium

A selective medium for the isolation and differentiation of *Corynebacterium diphtheriae* types. Hoyles medium is the well-known modification for the cultural isolation and differentiation of *Corynebacterium diphtheriae* types. The medium does not exert the inhibitory effect, but gives very rapid growth with all types of *Corynebacterium diphtheriae*, enabling diagnosis after 18 hours incubation.



Corynebacterium diphtheriae mitis
NCTC 10356

Image shown
incubated: 3 days
at 35–39°C

Product Code	Format
PO0143A	90mm Plates

* UK ** Mainland Europe
Product codes are valid for all countries, except USA, unless stated otherwise.

Dermatophytes

Dermasel Selective Medium

A selective medium for the primary isolation and identification of dermatophytes and other fungi from hair, nails or skin scrapings. Dermasel Agar shows characteristic colonial morphology with typical pigmentation.



Trichophyton rubrum ATCC®
28191™

Image shown
incubated: 72–120 hr.
at 20–25°C, aerobic

Product Code	Format
PO5037A**	90mm Plates
PO0737A*	90mm Plates

Dermatophyte Medium with Chloramphenicol (100 mg/L)

Product Code	Format
PO0964A	90mm Plates

Dermatophyte Medium with Phenol Red

PO0166A	90mm Plates
---------	-------------

Dermatophytes Selective Agar (Taplin)

PO5087A	90mm Plates
---------	-------------

ATCC Licensed
Derivative

Escherichia coli O157

Enterohaemolysin Agar with Blood

A medium for the detection and isolation of enterohaemolysin-forming enterohaemorrhagic *Escherichia coli* (EHEC). Approximately 90% of EHECs, including all EHEC O157:H7, exhibit the formation of enterohaemolysin as a phenotypic feature. Enterohaemolysin formation is well suited as a means for identifying EHEC in enterohaemolysin agar—even at the lowest bacterial counts and with large amounts of accompanying flora. EHECs in food samples also exhibit enterohaemolysin formation and can therefore be identified on Enterohaemolysin agar.



Escherichia coli
NCTC 12900

Image shown
incubated: 18–24 hr.
at 36 ± 1°C, aerobic

Product Code	Format
PB5105A	90mm Plates

Sorbitol MacConkey Agar

A selective and differential medium for the detection of *Escherichia coli* O157. Sorbitol MacConkey Agar is recommended for the isolation of pathogenic *Escherichia coli* O157. The formulation is identical to MacConkey Agar No. 3, except that lactose has been replaced with sorbitol. *Escherichia coli* O157 does not ferment sorbitol and therefore, produces colourless colonies. In contrast, most *Escherichia coli* strains ferment sorbitol and form pink colonies.



Escherichia coli O157
NCTC 12900

Image shown
incubated: 18–24 hr.
at 36 ± 1°C, aerobic

Product Code	Format
PO5069A**	90mm Plates
PO0232A*	90mm Plates

Sorbitol MacConkey with Cefixime Tellurite

A selective and differential medium for the detection of *Escherichia coli* O157. The principle of this medium is the same as for Sorbitol MacConkey Agar. The addition of cefixime and potassium tellurite to Sorbitol MacConkey Agar improves the selectivity of the medium. The level of potassium tellurite selects serogroup O157 from other *Escherichia coli* serogroups and inhibits *Providencia* and *Aeromonas* spp. Cefixime is inhibitory to *Proteus* spp.



Escherichia coli
NCTC 12900

Image shown
incubated: 18–24 hr.
at 35–39°C, aerobic

Product Code	Format
PO0702A	90mm Plates

* UK ** Mainland Europe
Product codes are valid for all countries, except USA, unless stated otherwise.

Escherichia coli O157

Bottles

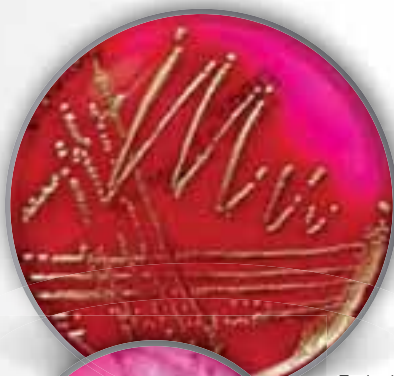
Modified Tryptone Soya Broth with Novobiocin

Product Code	Format
BO0869E	100x10 mL, Universal – 1 oz. Straight walled

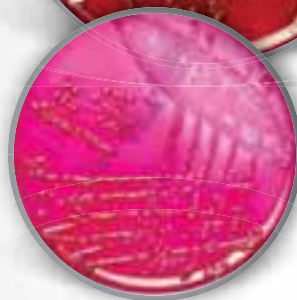
Enterobacteriaceae

Endo Agar

A medium for the detection and isolation of Enterobacteriaceae. The formulation allows an easy identification of *Escherichia coli* and *Klebsiella spp.* due to the metallic shining of the colonies.



Escherichia coli
ATCC® 25922™



Klebsiella oxytoca
NCIMB 12819

Image shown
incubated: 18–24 hr.
at 36 ± 1°C, aerobic

Product Code	Format
PO5005A	90mm Plates

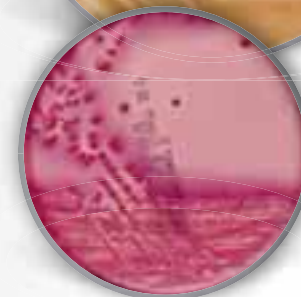
* UK ** Mainland Europe
Product codes are valid for all countries, except USA, unless stated otherwise.

MacConkey Agar No. 3

A more selective modification of MacConkey medium suitable for the detection and enumeration of coliform organisms, and also for the detection and isolation of *Salmonella* and *Shigella spp.* occurring in pathological and food specimens. Due to the inclusion of a specially prepared fraction of bile salts in addition to crystal violet, the medium gives improved differentiation between coliforms and non-lactose fermenting organisms whilst Gram-positive cocci are completely inhibited.



Salmonella typhimurium
ATCC® 14028™



Escherichia coli
ATCC® 25922™

Image shown
incubated: 18–48 hr.
at 32 ± 1°C, aerobic

Product Code	Format
PO5002A**	90mm Plates
PO0495A*	90mm Plates

Enterobacteriaceae

Violet Red Bile Glucose Agar (VRBD / VRBGA)

A glucose-containing selective medium for the detection and enumeration of Enterobacteriaceae in food products. A clear medium that yields colonies of satisfactory size giving reproducible counts of typical colonies of Enterobacteriaceae. Promotes adequate growth, acid formation and, where required, adequate gas formation.



Salmonella typhimurium ATCC® 14028™

Escherichia coli ATCC® 25922™

Image shown incubated: 24 hr. at 36 ± 1°C, aerobic

Product Code	Format
PO5043A	90mm Plates

Brilliance CRE Agar

For more information please refer to section: *Brilliance Chromogenic Media* (page number 16)

Product Code	Format
PO1226A	90mm Plates

Brilliance ESBL Agar

For more information please refer to section: *Brilliance Chromogenic Media* (page number 17)

PO5302A	90mm Plates
---------	-------------

Eosin Methylene Blue Agar (Modified) Levine

PO5045A	90mm Plates
---------	-------------

MacConkey Agar

PO5146A	90mm Plates
---------	-------------

MacConkey Agar (EP / USP / JP / BP)

PO1142A	90mm Plates
---------	-------------

MacConkey Agar No. 2

A selective medium for the detection and enumeration of coliforms, for the detection and isolation of *Salmonella* and *Shigella* spp. and the recognition of enterococci. MacConkey Agar No. 2 is a modification of the original MacConkey solid medium and is especially useful for the recognition of enterococci, in the presence of coliforms and non-lactose fermenters from water, sewage, food products, etc.

PO5110A	90mm Plates
---------	-------------

MacConkey Agar with Salt

Product Code	Format
PO0149A	90mm Plates

MacConkey Agar without Sodium Chloride

PO5131A**	90mm Plates
PO0148A*	90mm Plates

Violet Red Bile Agar

PO5075A	90mm Plates
---------	-------------

Violet Red Bile Agar with MUG

PO5031A	90mm Plates
---------	-------------

Violet Red Bile Glucose Agar (EP / USP / JP / BP)

PO1167A	90mm Plates
---------	-------------

ATCC Licensed Derivative

* UK ** Mainland Europe

Product codes are valid for all countries, except USA, unless stated otherwise.

Enterobacteriaceae

Contact Plates

MacConkey Agar No. 3

A more selective modification of MacConkey medium suitable for the detection and enumeration of coliform organisms and also for the detection and isolation of *Salmonella* and *Shigella spp.* occurring in pathological and food specimens. Due to the inclusion of a specially prepared fraction of bile salts in addition to crystal violet, the medium gives improved differentiation between coliforms and non-lactose fermenting organisms whilst Gram-positive cocci are completely inhibited.



Escherichia coli
ATCC® 25922™

Image shown
incubated: 18–24 hr.
at 36 ± 1°C, aerobic

Product Code	Format
PO5053C	55mm Contact Plates

Violet Red Bile Glucose Agar (VRBD / VRBGA)

Product Code	Format
PO5102C	55mm Contact Plates

Bi-plates

For full product range of Bi-plates please refer to page number 9

Columbia Agar with Blood / Endo Agar

For more information please refer to section:
Bi-plates (page number 10)

PB5200E	90mm Bi-plate
---------	---------------

Columbia Agar with Blood / MacConkey Agar No. 3

For more information please refer to section:
Bi-plates (page number 10)

PB5207E	90mm Bi-plate
---------	---------------

Columbia CNA Aesculin Selective Agar / MacConkey Agar No. 3, Mod.

For more information please refer to section:
Bi-plates (page number 11)

PB5224E	90mm Bi-plate
---------	---------------

CLED Medium / MacConkey Agar No. 3

For more information please refer to section:
Bi-plates (page number 9)

PO5217E	90mm Bi-plate
---------	---------------

Columbia CNA Aesculin Selective Agar / Brilliance UTI Agar

For more information please refer to section:
Bi-plates (page number 10)

PB5220E	90mm Bi-plate
---------	---------------

Tubes

Kligler Iron Slant Agar (with Urea)

Product Code	Format
TV5004D	50x9 mL, Tube with screw cap

S.I.M. Medium

TV5014E	50x10 mL, Tube with screw cap
---------	-------------------------------

Simmons Citrate Slant Agar

TV5015Z	50x7.5 mL, Tube with screw cap
---------	--------------------------------

Triple Sugar Iron Slant Agar

TV5074D	50x9 mL, Tube with screw cap
---------	------------------------------

Urea Broth (Christensen and Maslen)

TV5007N	50x6 mL, Tube with screw cap
---------	------------------------------

ATCC Licensed
Derivative

Enterobacteriaceae

Bottles

Citrate Agar Slope

Product Code	Format
BO0379B	24x3 mL, Bijou – 1/4 oz. Straight walled

Lactose Broth

BO0596Z	10x90 mL, Sirop – Screw cap bottle
---------	------------------------------------

Lactose Peptone Water with Durham Tube

BO0435B	24x3 mL, Bijou – 1/4 oz. Straight walled
---------	--

MacConkey Broth

BO0550M	10x100 mL, Sirop – Screw cap bottle
---------	-------------------------------------

MacConkey Broth (Purple) with Durham Tube

BO0347E	24x10 mL, Universal – 1 oz. Straight walled
---------	---

MacConkey Broth Purple

BO0376M	10x100 mL, Sirop – Screw cap bottle
---------	-------------------------------------

MacConkey Broth Purple (X2 Strength) with Durham Tube

BO0364E	24x10 mL, Universal – 1 oz. Straight walled
---------	---

Urea Agar Slope

Product Code	Format
EB0337B	200x3 mL, Bijou – 1/4 oz. Straight walled
BO0337B	24x3 mL, Bijou – 1/4 oz. Straight walled

Urea Broth

BO0338B	24x3 mL, Bijou – 1/4 oz. Straight walled
---------	--

Violet Red Bile Agar

BO0455M	10x100 mL, Sirop – Screw cap bottle
---------	-------------------------------------

Violet Red Bile Glucose Agar

BO0197M	10x100 mL, Sirop – Screw cap bottle
---------	-------------------------------------



Enterococci

Aesculin Blood Agar (Modified)

A medium for the isolation and differentiation of bacteria involved in bovine mastitis. Due to the inclusion of blood, Aesculin Blood Agar ensures the growth of staphylococci and streptococci, and permits direct detection of enterococci and *Streptococcus uberis* by means of the aesculin cleaving. The growth of coliform bacteria, pseudomonads and yeasts is also possible on the non-selective agar. Due to the relatively high agar content, the medium exhibits a high gel strength so that all samples of a quarter milk can be spread onto a single plate. In comparison with coliform bacteria, streptococci as well as yeasts grow as smaller colonies than, for example, on Columbia Agar with sheep blood.



Staphylococcus aureus ATCC® 6538™

Enterococcus faecalis ATCC® 29212™

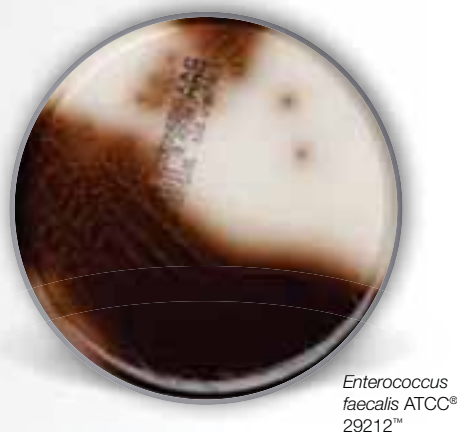
Image shown incubated: 18–24 hr. at 36 ± 1°C, aerobic

Product Code	Format
PB5023A	90mm Plates

* UK ** Mainland Europe
Product codes are valid for all countries, except USA, unless stated otherwise.

Enterococcus Selective Agar (BAA) Bile Aesculin Azide Agar

Selective agar used for the isolation, presumptive identification and enumeration of faecal streptococci (group D). Those bacteria are able to hydrolyse aesculin into aesculetin and glucose. The bondage of aesculetin and ferric ammonium citrate causes the brown-black to black halo around the colonies. Ox bile inhibits the growth of Gram-positive bacteria except enterococci, while Sodium azide suppresses the Gram-negative bacteria.



Enterococcus faecalis ATCC® 29212™

Image shown incubated: 18–24 hr. at 36 ± 1°C, aerobic

Product Code	Format
PO5062A	90mm Plates

Bile Aesculin Agar

Product Code	Format
PO0169A	90mm Plates

Brilliance VRE Agar

For more information please refer to section: *Brilliance Chromogenic Media* (page number 20)

PO1175A	90mm Plates
---------	-------------

Kanamycin Aesculin Azide Selective Medium

PO5059A**	90mm Plates
PO0173A*	90mm Plates

VRE Selective Agar

PO5089A	90mm Plates
---------	-------------

Bottles

Aesculin Agar (Slope)

Product Code	Format
BO0826B	24x3 mL, Bijou – 1/4 oz. Straight walled

Bile Aesculin Agar (Slope)

BO0339B	24x3 mL, Bijou – 1/4 oz. Straight walled
---------	--

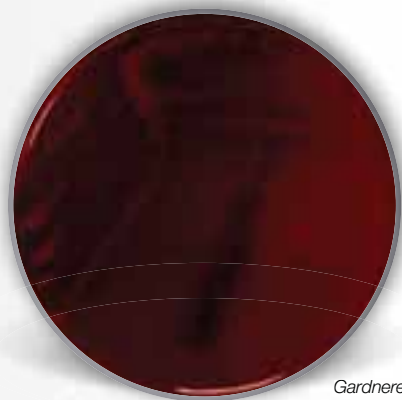
ATCC Licensed Derivative®

Culture Media by Organism Type

Gardnerella

Gardnerella vaginalis Selective Medium

A selective medium for the isolation of *Gardnerella vaginalis* from clinical specimens. Gardnerella vaginalis Selective Medium contains a special blood agar base that enhances the growth of fastidious organisms and maintains the osmotic balance of the medium. Human blood erythrocytes act as nutritional and diagnostic criterium as *Gardnerella vaginalis* will only show β -haemolysis on rabbit or human blood containing media. Tween 80 improves the size of the haemolytic zones whereas Gentamicin, Nalidixic acid and Amphotericin B inhibit accompanying flora.



Gardnerella vaginalis
ATCC® 14018™

Image shown incubated:
40–48 hr. at 36 ± 1°C,
microaerophilic

Product Code	Format
PB5067A	90mm Plates

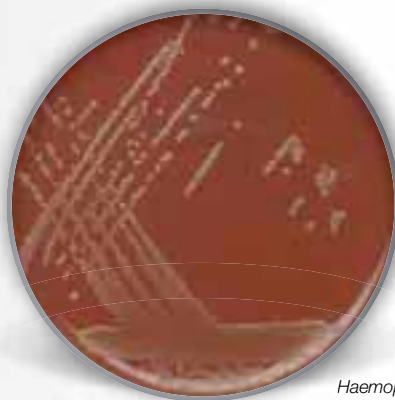
Gardnerella Selective Agar with Sheep Blood

Product Code	Format
PB0134A	90mm Plates

Haemophilus and Neisseria

Chocolate Agar with Vitox

A highly nutritious medium for the isolation and cultivation of fastidious microorganisms. The presence of starch ensures that toxic metabolites produced by *Neisseria* are absorbed. Phosphate buffers are included to prevent changes in pH due to amine production that would affect the survival of the organism.



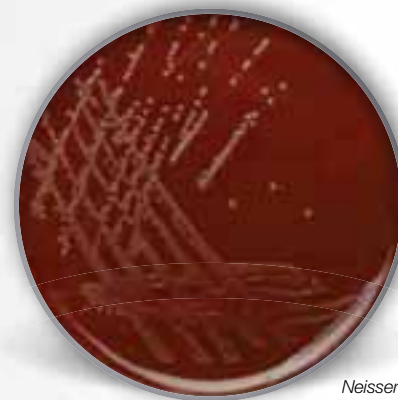
Haemophilus influenzae ATCC®
10211™

Image shown incubated:
40–48 hr. at 36 ± 1°C,
enhanced CO₂
atmosphere

Product Code	Format
PO5090A	90mm Plates

Columbia Agar with Chocolate Horse Blood

A multi-purpose nutritious medium containing chocolate blood suitable for the cultivation of most pathogens including the more fastidious organisms.



Neisseria gonorrhoeae ATCC®
49226™

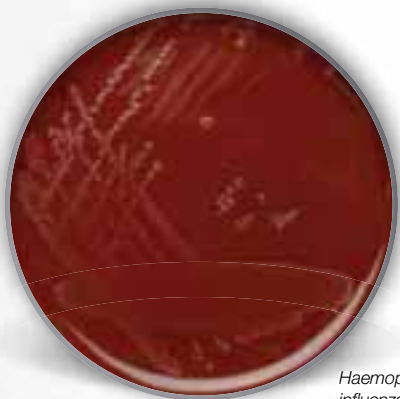
Image shown incubated:
36–48 hr. at 35–39°C,
in 10% (v/v) CO₂
atmosphere

Product Code	Format
PB0124A	90mm Plates

Haemophilus and Neisseria

Columbia Agar with Chocolate Horse Blood and Bacitracin

A highly nutritious medium enriched with chocolate horse blood. Suitable for the isolation of most pathogens including many fastidious organisms. The addition of Bacitracin makes it particularly suitable for the selective isolation of *Haemophilus* spp.



Haemophilus influenzae ATCC® 49247™

Image shown incubated: 36–48 hr. at 35–39°C, in 10% (v/v) CO₂ atmosphere

Product Code	Format
PB0220A	90mm Plates

Neisseria Selective Medium PLUS

A medium for the isolation and cultivation of pathogenic *Neisseria* spp. The presence of starch ensures that toxic metabolites produced by *Neisseria* are absorbed. Phosphate buffers are included to prevent changes in pH due to amine production that would affect the survival of the organism.



Neisseria gonorrhoeae ATCC® 49226™

Image shown incubated: 48 hr. at 36 ± 1°C, aerobic, enhanced CO₂ atmosphere

Product Code	Format
PO5004A	90mm Plates

Chocolate G.C. Selective Agar

Product Code	Format
PB0963A	90mm Plates

G.C. Selective Agar (VCNT Chocolate)

PB0136A	90mm Plates
---------	-------------

G.C. Selective Agar (VCNT) with Lysed Blood

PB0135A	90mm Plates
---------	-------------

G.C. Selective Agar with Lysed Horse Blood and LCAT

PB0226A	90mm Plates
---------	-------------

G.M.P. G.C. Agar (Lysed) V.C.A.T.

PB0820A	90mm Plates
---------	-------------

Haemophilus Selective Agar (Chocolate Agar with Vitox, Bacitracin, Vancomycin, Amphotericin B)

PO5097A	90mm Plates
---------	-------------

Lysed G.C. Selective Agar with V.C.A.T. Supplement

PB0962A	90mm Plates
---------	-------------

Lysed G.C. Selective Agar

PB1205A	90mm Plates
---------	-------------

Bi-plates

Columbia Agar with Blood / Chocolate Agar

For more information please refer to section: Bi-plates (page number 9)

PB5202E	90mm Bi-plate
---------	---------------

Helicobacter pylori

Helicobacter pylori Selective Agar

A selective medium for the isolation of *Helicobacter pylori* from clinical specimens. The supplements cefsulodin and amphotericin B are added to inhibit *Candida spp.* This ensures a higher isolation rate for *Helicobacter pylori* and lower contamination by other organisms.

Product Code	Format
PB0398A	90mm Plates

Lactobacilli / Bifidobacteria

M.R.S. Agar

A medium for the cultivation, isolation and enumeration of 'lactic acid bacteria' that includes Lactobacillus, Streptococcus, Pediococcus and Leuconostoc. M.R.S. Agar is superior as it gives more profuse growth of all strains of lactobacilli, especially the difficult and slow growing strains of *Lactobacillus brevis* and *Lactobacillus fermenti*.



Lactococcus lactis
ATCC® 19257™

Image shown
incubated: 72 hr. at
30 ± 1°C, aerobic

Product Code	Format
PO5047A**	90mm Plates
PO0231A*	90mm Plates

* UK ** Mainland Europe
Product codes are valid for all countries, except USA, unless stated otherwise.

Legionella

Legionella GVPC Selective Medium

A selective medium for the isolation of Legionellaceae. The media has been shown to yield optimal recovery of *Legionella* spp. in a shorter incubation period from environmental samples and clinical specimens.



Legionella pneumophila
NCTC 12174

Image shown
incubated: 72 hr. at
36 ± 1°C, high humid
atmosphere (>90%)

Product Code	Format
PO5074A**	90mm Plates
PO0245A*	90mm Plates

* UK ** Mainland Europe
Product codes are valid for all countries, except USA, unless stated otherwise.

Legionella MWY Selective Medium

A selective medium for the isolation of *Legionella* spp. MWY is more selective than GVPC. Bromocresol purple and Bromothymol blue colour the colonies and aid in the identification of the organisms. MWY Medium has been successfully tested for examination of clinical specimens.



Legionella pneumophila
NCTC 12174

Image shown
incubated: 72 hr. at
36 ± 1°C, humid
atmosphere

Product Code	Format
PO5071A	90mm Plates

Legionella BCYE-Agar W/O L-Cysteine

Product Code	Format
PO5028A**	90mm Plates
PO0255A*	90mm Plates

Legionella BCYEa Medium

PO5072A	90mm Plates
---------	-------------

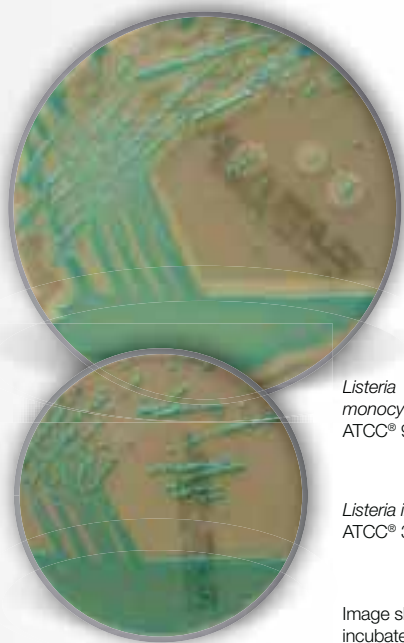
Legionella BMPa Selective Medium

PO5035A**	90mm Plates
PO0324A*	90mm Plates

Listeria

Chromogenic Listeria Agar (ISO)

A medium for isolation, enumeration and presumptive identification of *Listeria spp.* and *Listeria monocytogenes* from food and environmental samples. *Listeria monocytogenes* and pathogenic *Listeria ivanovii* are differentiated by their ability to produce the phospholipase enzymes, producing an opaque white halo around the colony. The formulation conforms to the ISO 11290-1 and 11290-2 standard methods.



Listeria monocytogenes
ATCC® 9644™

Listeria innocua
ATCC® 33090™

Image shown
incubated: 40–48 hr.
at 36 ± 1°C, aerobic

Product Code	Format
PO5183A**	90mm Plates
PO1196A*	90mm Plates

* UK ** Mainland Europe
Product codes are valid for all countries, except USA, unless stated otherwise.

Brilliance Listeria Agar

For more information please refer to section:
Brilliance Chromogenic Media (page number 21)

Product Code	Format
PO5165A**	90mm Plates
PO1102A*	90mm Plates

Listeria Selective Agar (Oxford)

PO5026A**	90mm Plates
PO0179A*	90mm Plates

Palcam Medium

PO5104A	90mm Plates
---------	-------------

Tryptone Soya Agar with Yeast Extract (TSYE)

PO5050A	90mm Plates
---------	-------------

Tubes

Fraser Broth

TV5020E	50x10 mL, Tube with screw cap
---------	-------------------------------

Bottles

Half Fraser Broth

BO0350S	10x225 mL, PET Bottle
BO0793S	10x225 mL, Sirop – Screw cap bottle

ONE Broth-Listeria

BO1066S	10x225 mL, Sirop – Screw cap bottle
---------	-------------------------------------

Mycoplasma

Mycoplasma / Ureaplasma Agar

A selective medium for the detection, isolation and enumeration of *Mycoplasma* and *Ureaplasma spp.* mainly from urogenital specimens. The antibiotic mixture inhibits most Gram-negative and Gram-positive bacteria as well as yeasts that might be present in the specimens. The colourless colonies of *Mycoplasma hominis* form the typical “fried egg” appearance (growth density dependent). Colonies of *Ureaplasma urealyticum* are dark-brown and grow in typical “sea urchin” morphology.

Product Code	Format
PO5081A	90mm Plates

Tubes

Mycoplasma / Ureaplasma Enrichment Broth

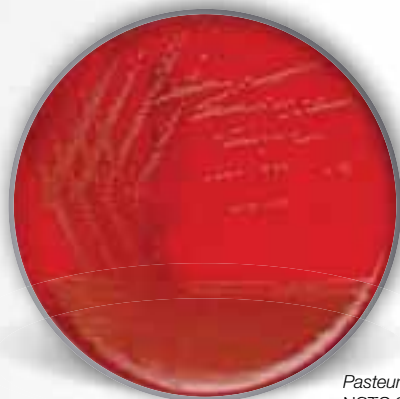
TV5081A	50x2 mL, Tube with screw cap
---------	------------------------------

ATCC Licensed
Derivative®

Pasteurella

Pasteurella Selective Medium

A selective medium for the isolation and cultivation of *Pasteurella* spp. *Pasteurella multocida* appears as grey shiny smooth colonies on the medium.



Pasteurella multocida
NCTC 8489

Image shown incubated:
18–48 hr. at $36 \pm 1^\circ\text{C}$, CO_2
enhanced atmosphere

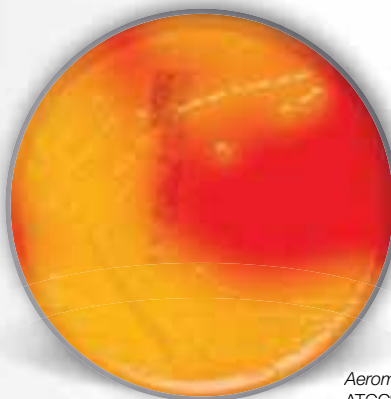
Product Code	Format
PB5175A	90mm Plates

* UK ** Mainland Europe
Product codes are valid for all countries, except USA, unless
stated otherwise.

Pseudomonas

Glutamate Starch Phenol Red Selective Medium

A medium for the detection of *Pseudomonas* and *Aeromonas* spp. from food and water. Only glutamate and starch are added to the agar as nutrients, which cannot be utilised by many organisms, thereby already representing a selection advantage for *Pseudomonas* spp. and *Aeromonas* spp. Starch utilisation by *Aeromonas* spp. leads to acid formation and the colonies can be easily differentiated from *Pseudomonas* spp. due to the resulting yellow colouration of the surrounding agar. Penicillin is added to the agar to suppress the Gram-positive accompanying flora.



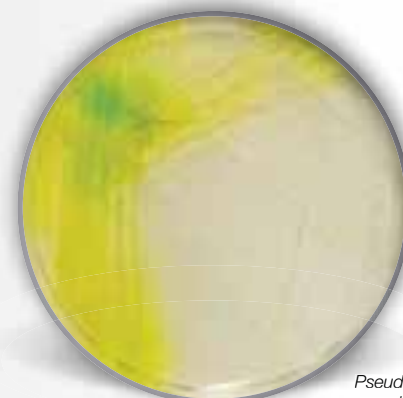
Aeromonas hydrophila
ATCC® 7966™

Image shown
incubated: 18–24 hr.
at $36 \pm 1^\circ\text{C}$, aerobic

Product Code	Format
PO5128A	90mm Plates

Pseudomonas C-N Selective Agar (Cetrimide Agar)

A medium for the selective isolation of *Pseudomonas aeruginosa*. The medium contains magnesium chloride and potassium sulphate for enhanced pigment production and better recovery of *Pseudomonas aeruginosa* with enhanced pigment formation whilst strongly suppressing *Klebsiella*, *Proteus* and *Providencia* spp.



Pseudomonas aeruginosa ATCC®
27853™

Image shown
incubated: 24–48 hr.
at $36 \pm 1^\circ\text{C}$, aerobic

Product Code	Format
PO5076A**	90mm Plates
PO0185A*	90mm Plates

Cetrimide Agar (USP / EP)

PO5181A	90mm Plates
---------	-------------

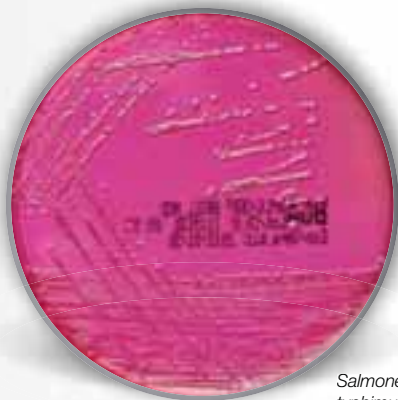
Pseudomonas CFC Selective Medium

PO5132A**	90mm Plates
PO0291A*	90mm Plates

Salmonella

Brilliant Green Agar (Modified)

A selective and diagnostic agar for *Salmonellae* other than *Salmonella typhi*. The advantage of this formulation is greater inhibition of *Escherichia coli* and *Proteus spp.* than other formulations.

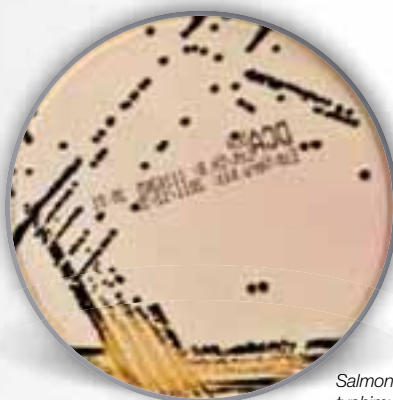


Salmonella
typhimurium ATCC®
14028™

Image shown
incubated: 18–48 hr.
at 36 ± 1°C, aerobic

Desoxycholate Citrate Agar (Hynes Modification)

A differential selective medium for the isolation of *Salmonella* and *Shigella spp.* The modified formulation gives larger and more numerous colonies of *Shigella spp.* that can easily be picked off and emulsified in saline for slide agglutination tests. The modification also makes the medium more inhibitory to coliforms and *Proteus spp.*

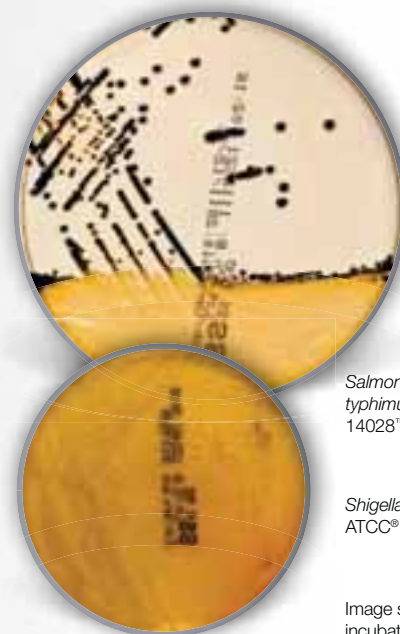


Salmonella
typhimurium ATCC®
14028™

Image shown
incubated: 18–24 hr.
at 36 ± 1°C, aerobic

S.S. Agar

A differential selective medium for the isolation of *Salmonella* and *Shigella spp.* Modifying the formulation to include a bile salt mixture, peptone and an altered pH value considerably improves the performance in the growth of *Shigellae* without increasing the growth of commensal organisms. *Salmonella* colonies are also larger with improved blackening at the centre.



Salmonella
typhimurium ATCC®
14028™

Shigella flexneri
ATCC® 12022™

Image shown
incubated: 18–24 hr.
at 36 ± 1°C, aerobic

Product Code	Format
PO5033A**	90mm Plates
PO0171A*	90mm Plates

Product Code	Format
PO5016A**	90mm Plates
PO0126A*	90mm Plates

Product Code	Format
PO5022A	90mm Plates

* UK ** Mainland Europe

Product codes are valid for all countries, except USA, unless stated otherwise.

Salmonella

X.L.D. Medium

Widely recognised in international standards, X.L.D. relies on xylose fermentation, lysine decarboxylation and production of hydrogen sulphide for the primary differentiation of *Shigella* and *Salmonella* spp. from non-pathogenic bacteria. The sensitivity and selectivity of X.L.D. Agar exceeds that of the traditional plating media e.g. Eosin Methylene Blue and Bismuth Sulphite agars, which tend to suppress the growth of Shigellae. The medium is tested according to ISO 11133-2.



Salmonella
typhimurium ATCC®
14028™

Image shown
incubated: 18–24 hr.
at 36 ± 1°C, aerobic

Product Code	Format
PO5057A**	90mm Plates
PO0164A*	90mm Plates

* UK ** Mainland Europe
Product codes are valid for all countries, except USA, unless stated otherwise.

Brilliance Salmonella Agar

Product Code	Format
PO5098A	90mm Plates

D.C.L.S. Agar

PO0127A	90mm Plates
---------	-------------

Gassner Medium

PO5021A	90mm Plates
---------	-------------

Hektoen Enteric Agar

PO5100A**	90mm Plates
PO0142A*	90mm Plates

MLCB Agar

PO5029A	90mm Plates
---------	-------------

Salmonella Chromogenic Medium

PO0958A	90mm Plates
---------	-------------

X.L.D. Agar (EP / USP / JP / BP)

PO1132A	90mm Plates
---------	-------------

X.L.T4 Medium

PO5116A**	90mm Plates
PO1158A*	90mm Plates

Bi-plates

Brilliance Salmonella / X.L.D. Agar

For more information please refer to section:
Bi-plates (page number 12)

Product Code	Format
PO5248E	90mm Bi-plate

S.S. Agar / X.L.D. Medium

For more information please refer to section:
Bi-plates (page number 11)

PO5210E	90mm Bi-plate
---------	---------------

ATCC Licensed
Derivative®

Salmonella

Tubes

Buffered Peptone Water

Product Code	Format
TV5013D	50x9 mL, Tube with screw cap

Lysine Decarboxylase Broth (Taylor)

TV5028N	50x6 mL, Tube with screw cap
---------	------------------------------

Muller-Kauffmann Tetrathionate Novobiocin Enrichment Broth

TV5065E	50x10 mL, Tube with screw cap
---------	-------------------------------

Ornithine Decarboxylase Broth (Taylor)

TV5031N	50x6 mL, Tube with screw cap
---------	------------------------------

Rappaport Vassiliadis (RV) Enrichment Broth Product

TV5017E	50x10 mL, Tube with screw cap
---------	-------------------------------

Rappaport-Vassiliadis Soya Peptone Broth (RVS)

TV5036E	50x10 mL, Tube with screw cap
---------	-------------------------------

Selenite Cystine Broth

TV5018E	50x10 mL, Tube with screw cap
---------	-------------------------------

Tetrathionate Broth (Muller-Kauffmann)

TV5006I	50x10 mL, Tube with screw cap
---------	-------------------------------

Thioglycollate Medium (EP / USP)

TV5001D	50x9 mL, Tube with screw cap
---------	------------------------------

Bottles

Buffered Peptone Water

Product Code	Format
BO0201S	10x225 mL, Sirop – Screw cap bottle
BO0688S	10x225 mL, Sirop – Plastic pot
BO0201Z	10x90 mL, Sirop – Screw cap bottle

ONE Broth-Salmonella

BO1096S	10x225 mL, Sirop – Screw cap bottle
---------	-------------------------------------

Rappaport-Vassiliadis Broth

BO0203M	10x100 mL, Sirop – Screw cap bottle
BO0203E	24x10 mL, Universal – 1 oz. Straight walled

Selenite Cystine Broth

BO0354E	24x10 mL, Universal – 1 oz. Straight walled
BO0354M	10x100 mL, Sirop – Screw cap bottle

Selenite F Broth

Product Code	Format
EB0213E	100x10 mL, Universal – 1 oz. Straight walled
BO0213E	24x10 mL, Universal – 1 oz. Straight walled

Tetrathionate Broth Base

BO0346E	24x10 mL, Universal – 1 oz. Straight walled
---------	--

Staphylococci / Streptococci

Columbia CAP Selective Agar with Sheep Blood

A selective medium for the isolation of Gram-positive bacteria from clinical specimens. The addition of colistin does inhibit the growth of a large portion of the Gram-negative accompanying flora. Traditionally, nalidixic acid was used to suppress these species, but this is losing effectiveness with increasing resistance rates. In addition, nalidixic acid can influence the colony morphology and colour of *Staphylococcus aureus* and make the reading more difficult. Columbia CAP agar represents a good alternative to Columbia CNA due to less resistance of *Proteus spp.*

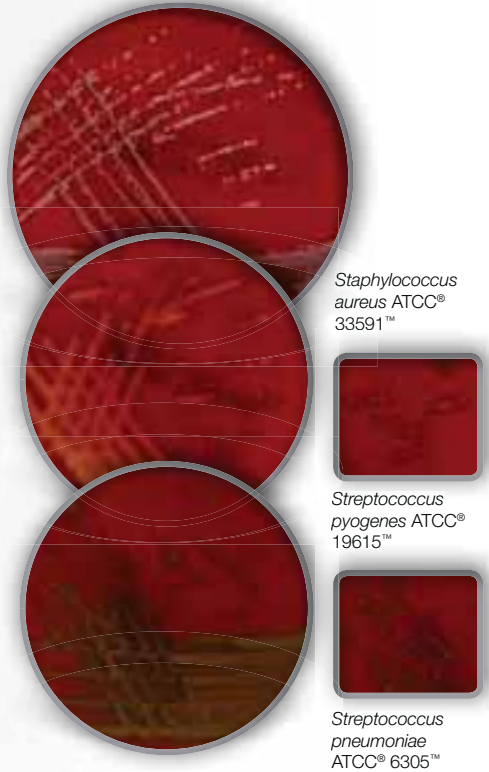


Image shown incubated: 18–24 hr. at 36 ± 1°C, aerobic

Product Code	Format
PB5082A	90mm Plates

Columbia Horse Blood CNA Agar

A selective medium for staphylococci and streptococci that enables important Gram-positive cocci to be recognised more readily. It provides easy isolation from mixed bacterial populations contained in many clinical specimens and foods.

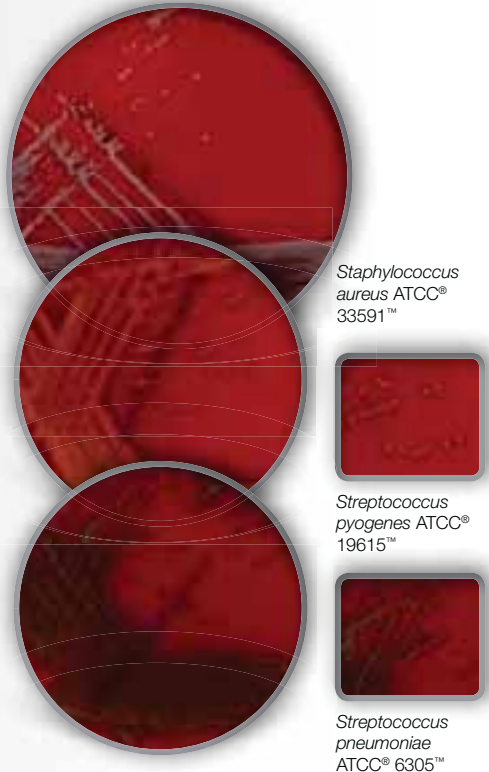


Image shown incubated: 18–24 hr. at 35–39°C, aerobic

Product Code	Format
PB0308A	90mm Plates

Staphylococci / Streptococci Selective Medium

A selective medium for the isolation of staphylococci and streptococci with clear haemolysis and typical growth for *Streptococcus pneumoniae* (dent morphology).

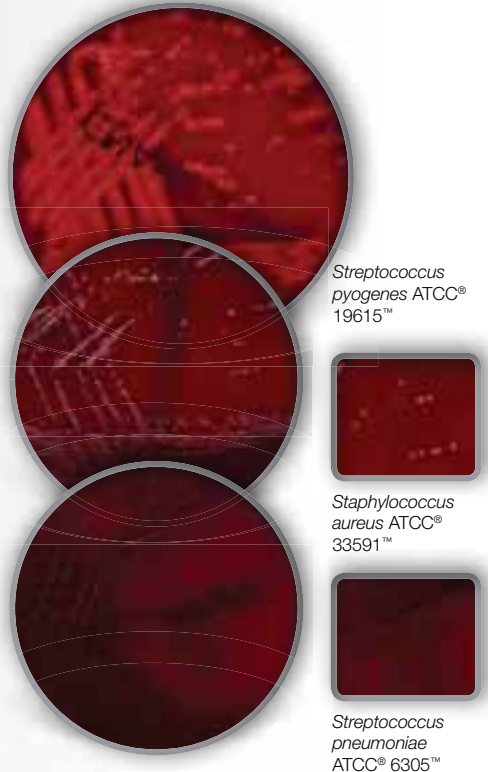


Image shown incubated: 18–24 hr. at 36 ± 1°C, aerobic

Product Code	Format
PB5049A	90mm Plates

Staphylococci / Streptococci *Staphylococcus aureus*

Islam's Medium

Product Code	Format
PO0229A	90mm Plates

Streptococcal Selective Agar C.O.B.A.

PB0298A	90mm Plates
---------	-------------

Baird Parker Agar

A very selective and diagnostic medium with high sensitivity for the isolation and enumeration of *Staphylococcus aureus*. The very selective and sensitive medium allows that *Staphylococcus aureus* reduces tellurite to form grey-black shiny colonies and produces clear zones around the colonies by proteolytic action. The formulation conforms to ISO 6888-1 standard method.



Staphylococcus aureus ATCC® 25923™



Staphylococcus saprophyticus ATCC® 15305™

Image shown
incubated: 24–48 hr.
at 36 ± 1°C, aerobic

Product Code	Format
PO5014A**	90mm Plates
PO0168A*	90mm Plates

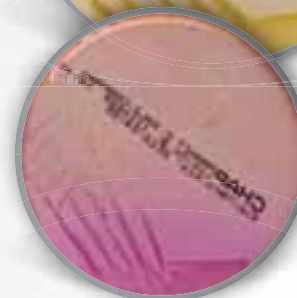
* UK ** Mainland Europe
Product codes are valid for all countries, except USA, unless stated otherwise.

Mannitol Salt Agar

A selective medium for the isolation of presumptive pathogenic staphylococci providing clear and easy differentiation of *Staphylococcus aureus* and *Staphylococcus epidermidis*. Most other bacteria are inhibited by the high salt concentration except a few halophilic species. Presumptive coagulase-positive staphylococci produce colonies surrounded by bright yellow zones whilst non-pathogenic staphylococci produce colonies with reddish purple zones.



Staphylococcus aureus ATCC® 6538™



Staphylococcus epidermidis ATCC® 12228™

Image shown
incubated: 24–48 hr.
at 32 ± 1°C, aerobic

Product Code	Format
PO5027A**	90mm Plates
PO0151A*	90mm Plates

Staphylococcus aureus

Brilliance MRSA 2 Agar

For more information please refer to section:
Brilliance Chromogenic Media (page number 17)

Product Code	Format
PO5310A**	90mm Plates
PO1210A*	90mm Plates

Brilliance Staph 24 Agar

For more information please refer to section:
Brilliance Chromogenic Media (page number 22)

PO1186A	90mm Plates
---------	-------------

DNASE Agar

PO0128A	90mm Plates
---------	-------------

DNASE Agar with Methyl Green

PO1000A	90mm Plates
---------	-------------

Mannitol Salt Agar (EP / USP / JP / BP)

PO1169A	90mm Plates
---------	-------------

Mannitol Salt Agar with Oxacillin

A selective medium for the presumptive identification of particularly methicillin-resistant *Staphylococcus aureus* (MRSA). Presumptive MRSA produce colonies surrounded by bright yellow zones.

PO0375A	90mm Plates
---------	-------------

Tryptone Bile Agar

PO5017A	90mm Plates
---------	-------------

Bottles

Selective Mannitol Broth

Product Code	Format
EB1016C	100x3 mL, Universal – 1 oz. Straight walled

Contrast MRSA Broth

EB1225B	24x3 mL, Universal – 1 oz. Straight walled
---------	---

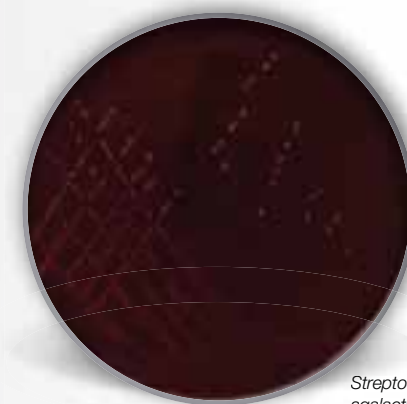
Nutrient Broth with 7.5% Salt

BO0424B	24x3 mL, Bijou – 1/4 oz. Straight walled
BO0424E	24x10 mL, Universal – 1 oz. Straight walled
EB0424E	100x10 mL, Universal – 1 oz. Straight walled

Streptococcus agalactiae

Edwards Medium with Sheep Blood (Modified)

A selective medium for the rapid isolation and easy identification of *Streptococcus agalactiae* and other streptococci involved in bovine mastitis. Aesculin differentiates the negative *Streptococcus agalactiae* (blue colonies) from aesculin-positive Group D streptococci (black colonies).



Streptococcus agalactiae ATCC® 13813™

Image shown
incubated: 18–24 hr.
at 36 ± 1°C, aerobic

Product Code	Format
PB5080A	90mm Plates

Trichomonas

Bottles

Trichomonas Medium

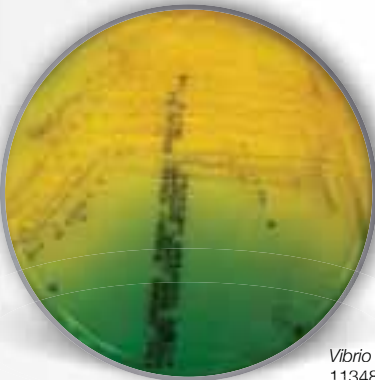
A medium for the cultivation of *Trichomonas vaginalis*. Trichomonas Medium has been slightly modified, which leads to reduced oxygen tension and consequently more prolific growth of trichomonads.

Product Code	Format
EB0861C	200x5 mL, Bijou – 1/4 oz. Straight walled

Vibrio

T.C.B.S. Cholera Medium

A selective isolation medium that promotes rapid growth of pathogenic vibrios after overnight incubation at 35°C. Other vibrios from environmental samples need incubation at 20–30°C.



Vibrio cholerae NCTC 11348

Image shown
incubated: 18–24 hr.
at 35–39°C

Product Code	Format
PO0194A	90mm Plates

Bottles

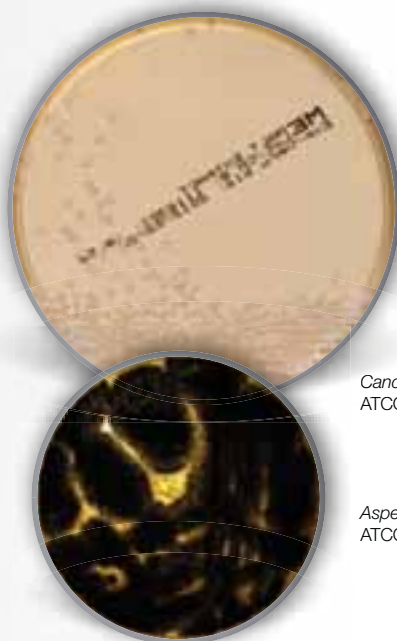
Alkaline Peptone Water

Product Code	Format
BO0335E	24x10 mL, Universal – 1 oz. Straight walled

Yeasts and Moulds

Malt Extract Agar

An acidic medium that supports the growth of most yeast and moulds whilst inhibiting most bacteria and is used for the detection, isolation and enumeration of yeasts and moulds.



Candida albicans
ATCC® 10231™

Aspergillus niger
ATCC® 16404™

Image shown
incubated: 48–72 hr.
at 22 ± 1°C, aerobic

Product Code

Format

PO5055A**

90mm Plates

PO0182A*

90mm Plates

* UK ** Mainland Europe
Product codes are valid for all countries, except USA, unless stated otherwise.

Sabouraud Glucose Selective Agar with Gentamicin and Chloramphenicol

An acid pH medium for the selective isolation of pathogenic fungi. Especially suited for fungi with a high water activity (Aw. value) optimum. Sabouraud Glucose Agar is frequently used in combination with various antibiotics for selective detection and isolation of moulds. The use of gentamicin and chloramphenicol leads to the following selective effects with only minimal compromising of the growth properties: Chloramphenicol is a broad spectrum antibiotic that suppresses Gram-positive and Gram-negative bacteria as well as acid-resistant bacilli. However, the growth of *Pseudomonas spp.* is only slightly suppressed while gentamicin is particularly effective against *Pseudomonas aeruginosa*.



Candida albicans
ATCC® 10231™

Image shown
incubated: 48–72 hr.
at 22 ± 1°C, aerobic

Product Code

Format

PO5096A

90mm Plates

Sabouraud Dextrose Agar

An acidic pH medium for the isolation of dermatophytes, other fungi and yeasts. The medium gives reliable results with *Microsporum audouini*, *Microsporum canis*, *Trichophyton mentagrophytes*, *Trichophyton flavum*, *Trichophyton rubrum* and *Candida albicans*.



Candida albicans
ATCC® 10231™

Image shown
incubated: 5 days
at 20–24°C

Product Code

Format

PO0410B

90mm Plates

Yeasts and Moulds

Biggy Agar

Product Code	Format
PO5011A	90mm Plates, Triple wrapped, Irradiated

Brilliance Candida Agar

For more information please refer to section: *Brilliance Chromogenic Media* (page number 16)

PO5170A**	90mm Plates
PO1034A*	90mm Plates

Chromogenic C. albicans Agar

PO5169A	90mm Plates
---------	-------------

Dichloran Rose-Bengal Chloramphenicol Medium

PO1227A	90mm Plates
---------	-------------

Dichloran-Glycerol (DG18) Selective Medium

PO5088A	90mm Plates
---------	-------------

Kimmig Medium

PO5019A	90mm Plates
---------	-------------

Oxytetracycline Glucose Yeast Extract Agar (OGYE)

PO0183A	90mm Plates
---------	-------------

Rice Agar

PO5064A	90mm Plates
---------	-------------

Rose Bengal Chloramphenicol Agar

PO0214A	90mm Plates
---------	-------------

Sabouraud Dextrose Agar with Chloramphenicol (Deep Fill)

Product Code	Format
PO0358A	90mm Plates

Sabouraud Dextrose Agar with Chloramphenicol and Actidione

PO0162A	90mm Plates
---------	-------------

Sabouraud Glucose Agar

PO5001A**	90mm Plates
PO0160A*	90mm Plates

Sabouraud Glucose Agar with Disinhibitor

PO5103A	90mm Plates
---------	-------------

Sabouraud Glucose Chloramphenicol Selective Agar

PO5070A**	90mm Plates
PO0161A*	90mm Plates

Wort Agar

PO5063A	90mm Plates
---------	-------------

Yeast Extract Glucose Chloramphenicol Medium (YGC-Medium)

PO5032A	90mm Plates
---------	-------------

Contact Plates

Dichloran-Glycerol (DG18) Selective Medium

A selective low water activity medium for xerophilic moulds from dried and semi-dried foods. The characteristics of the media make the medium especially suitable for enumeration because it allows unobscured growth of organisms that ordinarily form small colonies.

Product Code	Format
PO5313C	55mm Contact Plates

Malt Extract with Chloramphenicol

For the detection, isolation and enumeration of yeasts and moulds. A selective media that supports the growth of most yeast and moulds whilst inhibiting most bacteria.

PO5314C	55mm Contact Plates
---------	---------------------

Malt Extract Agar

PO5079C	55mm Contact Plates
---------	---------------------

Sabouraud Dextrose Agar

PO0192C	55mm Contact Plates
PO0394D	55mm Contact Plates, Triple wrapped, Irradiated

Sabouraud-Glucose Chloramphenicol Selective Agar

Contact plate with acid pH medium for the enumeration of dermatophytes, other fungi and yeasts on surfaces.

PO5094C	55mm Contact Plates
---------	---------------------

Yeasts and Moulds

Bi-plates

Brilliance Candida / Sabouraud G.C.

For more information please refer to section:
Bi-plates (page number 12)

PO5258E	90mm Bi-plate
---------	---------------

Bottles

Sabouraud Dextrose Agar

Product Code	Format
BO0408M	10x100 mL, Sirop – Screw cap bottle
BO0408T	10x250 mL, Sirop – Screw cap bottle

Sabouraud Dextrose Agar (Slope)

BO0342E	24x10 mL, Universal – 1 oz. Straight walled
---------	---

Sabouraud Dextrose Agar with Chloramphenicol

BO0756M	10x100 mL, Sirop – Screw cap bottle
---------	-------------------------------------

Sabouraud Liquid Medium (EP / USP / JP / BP)

BO0358E	24x10 mL, Universal – 1 oz. Straight walled
---------	---

Yeast Extract Agar

Product Code	Format
BO0556Q	24x20 mL, Universal – 1 oz. Straight walled
BO0635M	10x100 mL, Sirop – Screw cap bottle

Yeast Extract Glucose Agar Base (OGYE)

BO0783M	10x100 mL, Sirop – Screw cap bottle
---------	-------------------------------------

Yersinia

Yersinia Selective Medium (CIN)

CIN Medium is recommended for the isolation and enumeration of *Yersinia enterocolitica* from clinical specimens and food. Specifically developed for the optimum growth and recovery of *Yersinia enterocolitica* after 18 to 24 hours incubation at 32°C. The typical colonies of *Yersinia enterocolitica* will develop as a red bull's-eye surrounded by a transparent border and will vary considerably among serotypes in colony size, smoothness and the ratio of the border to centre diameter. Most other organisms that are capable of growing will produce larger colonies (>2mm in diameter) with diffuse pinkish centres and opaque outer zones. *Serratia liquefaciens*, *Citrobacter freundii* and *Enterobacter agglomerans* may give a colonial morphology resembling *Yersinia enterocolitica*. These organisms can be differentiated from *Yersinia enterocolitica* by biochemical tests. The formulation conforms to ISO 10273 and the medium is tested according to ISO 11133-2 standard method.



Yersinia enterocolitica
ATCC® 9610™

Image shown
incubated: 18–24 hr.
at 30 ± 1°C

Product Code	Format
PO5044A**	90mm Plates
PO0287A*	90mm Plates



The ATCC Licensed Derivative® Emblem, the ATCC Licensed Derivative® word mark, and the ATCC catalog marks are trademarks of ATCC. Thermo Fisher Scientific Inc. is licensed to use these trademarks and to sell products derived from ATCC® cultures.

thermoscientific.com/preparedmedia

© 2013 Thermo Fisher Scientific Inc. All rights reserved. ATCC® is a trademark of ATCC. All other trademarks are the property of Thermo Fisher Scientific and its subsidiaries. Specifications, terms and pricing are subject to change. Not all products are available in all countries. Please consult your local sales representative for details.

Contact Information:

International
+44 (0) 1256 841144
oxid.info@thermofisher.com

LT2096A
December 2013



SISTEMAS AVANZADOS DE ANÁLISIS, S.L.

CIF: B-47700026

C/. Cardenal Torquemada, 24

Tel. 983 251 143 • 637 596 017

47010 VALLADOLID

www.analisisavanzados.com

Thermo
S C I E N T I F I C

Part of Thermo Fisher Scientific